



16 October 2009

To: Board Members of the South Cambridgeshire Crime and Disorder Reduction Partnership
Vickie Crompton, Mick Harding, Stephen Hills, Rick Hylton, Tom Jefford, County Councillor David Jenkins, District Councillor Ray Manning, County Councillor Linda Oliver, County Councillor John Reynolds, Chief Inspector David Sargent, and Darcy Weaver.

Dear Sir / Madam

You are invited to attend the next meeting of **SOUTH CAMBRIDGESHIRE CRIME AND DISORDER REDUCTION PARTNERSHIP**, which will be held in the **SWANSLEY ROOM, GROUND FLOOR** at South Cambridgeshire Hall, Cambourne Business Park, Cambourne, Cambridge, CB23 6EA on **MONDAY, 26 OCTOBER 2009** at **10.00 a.m.**

Yours faithfully

IAN SENIOR

Democratic Services Officer, South Cambridgeshire Crime and Disorder Reduction Partnership

South Cambridgeshire District Council is committed to improving, for all members of the community, access to the agendas and minutes it produces. We try to take all circumstances into account but, if you have any specific needs, please let us know, and we will do what we can to help you.

	AGENDA	PAGES
1.	Election of Chairman (Stephen Hills)	
2.	Appointment of Vice-Chairman (Chairman)	
3.	Introductions and Apologies	
4.	Declarations of Interest	
5.	Minutes of Previous Meeting (Chairman)	1 - 6

South Cambridgeshire District Council, South Cambridgeshire Hall, Cambourne Business Park, Cambourne, Cambridge CB23 6EA

Tel: 03450 450 500 Fax: 01954 713149

Democratic Services Contact Officer: Ian Senior 03450 450 500

6.	Strategic assessment and priorities for 2010-2013 Rolling Plan (Leigh Roberts)	7 - 52
7.	Change of Partnership name (Neil Weston)	Verbal Report
8.	Probation Service as a Strategic Partner (Chairman)	Verbal Report
9.	2009-10 funding plan update (Neil Weston)	53 - 56
10.	CDRP performance report - 2nd Quarter 2009-10 (Chairman / Task Group Chairmen / Leigh Roberts / Neil Weston)	57 - 82
11.	CDRP response and action to performance report (Chairman)	Verbal Report
12.	Fire Service Performance Figures (Rick Hylton)	Verbal Report

INFORMATION EXCHANGE

13.	Policing Plan (Nick Lidstone / Jenny Massie)	Verbal Report
14.	Growth update	83 - 84
15.	Survey Data from Environmental Health	To Follow
16.	Dates of future meetings It is proposed that future meetings be held at 10.00am on the following days:	
	<ul style="list-style-type: none"> • Monday 1 February 2010 • Monday 26 April 2010 • Monday 26 July 2010 • Monday 25 October 2010 	

SOUTH CAMBRIDGESHIRE DISTRICT COUNCIL

Minutes of a meeting of the South
Cambridgeshire Crime and Disorder Reduction
Partnership held on Monday, 27 July 2009 at
10.00 a.m.

PRESENT: JE Reynolds – Chairman
R Hylton – Vice-Chairman

Members:	Ms V Crompton	Cambridgeshire Drug and Alcohol Team
	M Harding	Cambridgeshire Probation
	S Hills	Corporate Manager (Affordable Housing), SCDC
	P Mungroo	Magistrate
	Cllr Mrs L Oliver	Cambridgeshire County Council
	Ms L Roberts	Senior Research Officer, Community Safety, Cambridgeshire County Council
	Cl V Skeels	Cambridgeshire Police
	Ms D Weaver	Cambridgeshire NHS
	Philip Aldis	Community Safety Officer, SCDC
	Jenny Massie	Partnership Officer, Cambridgeshire Police
	Chris Savage	Sector Inspector, Cambridgeshire Police
	Ian Senior	Democratic Services Officer
	Neil Weston	Partnership Support Officer, SCDC

Action**59. APOLOGIES**

Apologies for absence were received from Tom Crawford (Cambridgeshire County Council), Tom Jefford (Cambridgeshire County Council), Denise Lewis (South Cambridgeshire District Council) and Councillor Ray Manning (South Cambridgeshire District Council).

60. DECLARATIONS OF INTEREST

There were no declarations of interest.

61. MINUTES OF PREVIOUS MEETING AND MATTERS ARISING CLLR JOHN REYNOLDS)

The Crime and Disorder Reduction Partnership accepted the minutes of the meeting held on 28 April 2009 as a correct record.

The CDRP noted that improvements to communication (Minute 42 refers) had yet to be progressed and therefore did not form part of the current agenda.

The advice sheets referred to in Minute 43 had been distributed to householders in June 2009, as part of the delivery of the *South Cambs Magazine*.

At Minute 48, the Chairman observed that no suggested alternative names had been received. While Councillor Oliver questioned the need

to alter a recognised brand, the Chairman was keen to progress this matter, suggesting that a more positive name might be more appropriate. In order to expedite the issue, proposals would be circulated in due course for decision by e-mail.

NW

At Minute 49 (Change to CDRP Task Groups), the Board noted that membership had now been reviewed.

62. CDRP FUNDING 2008-09 - FINAL REPORT (PHILIP ALDIS - COMMUNITY SAFETY OFFICER, SCDC)

The Crime and Disorder Reduction Partnership received a report on revenue, capital and pooled funding expenditure in 2008-09.

PA explained that the maternity leave of the CDRP Partnership Support Officer had resulted in an unexpected underspend of £4050.13 The Board agreed for the £4050.13 underspend to be allocated to the Pooled Fund to ensure funds are fully spent for 2008-9.

63. CDRP FUNDING PLAN 2009-10 (NEIL WESTON - PARTNERSHIP SUPPORT OFFICER, SCDC)

The Crime and Disorder Reduction Partnership received a draft funding plan for 2009-10.

NW explained that 13 items in the plan had been agreed previously by e-mail following a request to consider them sent on 4th June and responses received between that date and the end of June 2009, and eight for discussion by those present at the meeting. The Chairman said that schemes considered for approval must be capable of delivering change.

The Board discussed eight new funding requests:

Those present discussed Alcohol Treatment Requirements (Item 8) at length. MH conceded that the Probation Service was seeking funds from each CDRP in the County, but was unable to give an assurance that South Cambridgeshire would receive value equivalent to the money being sought from the South Cambridgeshire Crime and Disorder Reduction Partnership. VS reported the City CDRP had declined making a grant, arguing that the Probation Service was already mandated to deliver Alcohol Treatment from its mainstream budget. The Crime and Disorder Reduction Partnership **agreed** not to fund Alcohol Treatment requirements in 2009-10.

In relation to Item 19 (Youth Project Gamlingay), the Chairman suggested that, given the large amount of money being sought overall, and the consequent likelihood that the project would not be delivered during 2009-10, this particular application for CDRP funding should be deferred for 12 months and reconsidered as a candidate for funding in 2010-11. Those present considered the Gamlingay application in general terms in the context of concurrent applications relating to security improvements to housing (Item 16) and a youth project in Shepreth (Item 18) and to the CDRP's objectives. Deliverability and making a difference were key factors.

Following the Chairman's lead, the CDRP **approved** funding for security improvements to housing on the basis that this would help tackle burglary and could be delivered quickly, and **supported**, in principle, the applications in Shepreth and Gamlingay, subject to clarification about whether money should be paid out of capital or from the pooled fund, the nature of the lease from Cambridgeshire County Council in Shepreth, business plans and an indication as to outcomes.

Subject to the above, the Crime and Disorder Reduction Partnership **agreed** the revenue and capital funding set out in the report, and pooled funding as follows:

Additional £5000 for project 9 (Wasted) (£8,000 Capital, £7,000 Pooled fund)

- Project 08: Alcohol Treatment requirements – Nil
- Project 14: Domestic Violence training and Awareness - £1,500
- Project 16: Security improvements to SCDC housing -£6000 capital
- Project 17: Street football - £4,400
- Project 18: Youth project, Gamlingay - £4,000 (provisional – subject to further information)
- Project 19: Youth project, Shepreth - £3,000 (provisional subject to further information)
- Project 20: ASB Task Group initiatives – Nil, but to be looked at as need arises
- Project 21: Targeted policing - £5,000

64. CDRP BOARD MEMBERSHIP (RICK HYLTON - VICE-CHAIRMAN)

Those present noted a report on the CDRP's revised membership structure. It was noted that

- Tom Jefford was now Lead Officer for Cambridgeshire County Council
- Cambridgeshire County Council had yet to notify PA as to who its Lead Member was to be
- Leigh Roberts needed to be added to the list as a Support Officer from Cambridgeshire County Council
- All aspects of NHS involvement had to be included in the CDRP's work
- Stephen Hills would be Lead Officer from South Cambridgeshire District Council for the foreseeable future

PA

NW

The Vice-Chairman noted that the Partnership's success depended in large part on the contributions of Board members and the effective reporting of performance.

65. CDRP PERFORMANCE REPORT - Q1 2009-10 (CLLR JOHN REYNOLDS - CHAIRMAN / TASK GROUP CHAIRS / LEIGH ROBERTS CCC / NEIL WESTON)

The Crime and Disorder Reduction Partnership received a performance report for the first Quarter of 2009-10, circulated at the meeting.

CS outlined some of the steps being taken by Cambridgeshire Constabulary to minimise the impact of burglary in the district.

66. ANNUAL REVIEW 2008-09 (NEIL WESTON)

Those present noted the South Cambridgeshire Crime and Disorder Reduction Partnership Rolling Plan 2008-11 – Performance Report.

67. ROAD SAFETY IN SOUTH CAMBRIDGESHIRE (CLLR RAY MANNING)

The Crime and Disorder Reduction Partnership received a letter dated 1 July 2009 from the Local Strategic Partnership relating to road safety in South Cambridgeshire.

Those present agreed with the LSP's view that it would make more sense for road safety to become an issue for the Crime and Disorder Reduction Partnership. However, it would be necessary to make sure that the Action Plan was consistent with the new responsibility, and that resources were sufficient. Effective communication between the CDRP and the Cambridgeshire and Peterborough Road Safety Partnership would be essential.

VS voiced concern that, although the Crime and Disorder Reduction Partnership consisted of the right agencies, the right specialists did not always represent those agencies at its meetings. Care would be needed to make sure that appropriate officer support was present for road safety issues. RH agreed to discuss with the Cambridgeshire and Peterborough Road Safety Partnership the practicalities of the new arrangement, the implications for the CDRP, and the nature of the work to be undertaken.

RH**68. CDRP AT THE SCRUTINY AND OVERVIEW COMMITTEE (DENISE LEWIS - LEAD OFFICER, SCDC)**

PA explained that the Scrutiny and Overview Committee had invited the CDRP to attend its meeting on Thursday 3 September 2009. PA explained that the Scrutiny and Overview Committee's principle motive was to make sure that the Crime and Disorder Reduction Partnership was operating as effectively as possible. The Chair and Vice chairman of the CDRP would be attending to represent the CDRP, and board members were invited to attend to observe as well as contribute to more technical questions.

The Chairman said that the Committee should be reminded about the Crime and Disorder Reduction Partnership's limited resources, and its reliance on member agencies.

All**69. ANTI-SOCIAL BEHAVIOUR INFORMATION EVENT (NEIL WESTON)**

Those present noted that this event would take place at South Cambridgeshire Hall, Cambourne Business Park, Cambourne on 29 September 2009. It would start at 7.00pm and last about one and a half hours.

The event was open to district, county and parish Councillors. Members of the Crime and Disorder Reduction Partnership were encouraged to attend. Its aim was to increase spread awareness of how anti-social behaviour is dealt with in the district and to provide examples of the wide

All

ranging work taking place in the District.

**70. ELECTION OF CHAIRMAN AND APPOINTMENT OF VICE-CHAIRMAN
CLLR JOHN REYNOLDS)**

Those present noted that the election of Chairman and appointment of Vice-Chairman would form part of the agenda for the meeting in October 2009. Cllr Reynolds asked Board Members to give consideration to who they would like to nominate and second for the posts of Chairman and Vice Chairman

All

71. STRATEGIC ASSESSMENT 2009 (LEIGH ROBERTS)

LR summarised the forthcoming CDRP Strategic Assessment, explaining that the CDRP has to produce the document in September, to be received at the October Board meeting. The assessment will inform the CDRP Rolling Plan for April 2010 to March 2011.

LR emphasised the importance of CDRP partners contributing data and information to the assessment, reminding partners that they are signed up to the South Cambridgeshire CDRP Information Sharing Agreement, designed to encourage the sharing of information between members and officers of, and attendees at, the South Cambridgeshire CDRP, thus fulfilling statutory duties to reduce crime and disorder, in accordance with section 115 of the Crime and Disorder Act 1998.

Those present noted that young people constituted one of several hard-to-reach groups within the district.

NW would circulate the Information Sharing Agreement at the end of the meeting, to take account of the recent board changes

NW / All

72. GROWTH UPDATE

The Crime and Disorder Reduction Partnership received the Growth Areas update report covering April and May 2009.

73. ENHANCED PLACE SURVEY DATA

The Crime and Disorder Reduction Partnership received the South Cambridgeshire District Council Health and Environmental Services – Annual Satisfaction Survey 2008-09, produced by MRUK Research.

**74. SPECIAL DOMESTIC VIOLENCE COURT PROGRAMME (SDVC)
TRANSFER OF GOVERNANCE & PERFORMANCE MANAGEMENT
RESPONSIBILITIES**

The Crime and Disorder Reduction Partnership received a letter dated 10 July 2009 relating to the Specialist Domestic Violence Court Programme.

75. DATE OF NEXT MEETING

Those present noted that the South Cambridgeshire Crime and Disorder Reduction Partnership would next meet on Monday 26 October 2009 in the Swansley Room, Ground Floor, South Cambridgeshire Hall,

Cambourne Business Park, Cambourne, Cambridge, CB23 6EA between 10.00am and 1.00pm. **The meeting had been extended in order to receive the 2009 Strategic Assessment presentation.**

The meeting ended at 11.50 a.m.



South Cambridgeshire Crime & Disorder Reduction Partnership

Strategic Assessment 2009

<p>Produced by: Cambridgeshire County Council, Research Group Leigh Roberts / Michael Soper / Susan Bumpus</p>

<p>Contact: 01223 715310 / Leigh.Roberts@Cambridgeshire.gov.uk</p>
--

CONTENTS

Executive Summary	3
Introduction	5
- Scope	6
- Priority Matrix	8
Progress Against Action Plan	9
Strategic Overview – All Crime	12
Serious Acquisitive Crime	14
- Dwelling Burglary	16
- Burglary Other	18
- Vehicle Crime	20
Violent Crime	22
- Domestic Violence / Abuse	24
Anti-Social Behaviour	26
- Neighbourhood Priorities	28
Misuse of Drugs	30
Offending	32
Economic Impact on Crime	36
Community Cohesion	40
Road Safety	44
Appendices	TO BE ADDED
- Technical Notes	

Executive Summary

Purpose

The purpose of the strategic assessment is to present and interpret a *summary* of intelligence analysis for the partnership area to help the partnership strategy group to set priorities and review the partnership plan. The Strategic Assessment includes:

- analysis of the levels and patterns of crime, disorder and substance misuse;
- an indication of changes since the last strategic assessment;
- interpretation of trends; and
- an assessment of progress against the current plan.

The partnership is required to review its current plans and priorities in light of the strategic assessment.

Headlines

- Over the last 12 months total crime has increased slightly by 1.5%.
- The largest volume decreases have been for vehicle crime (-38), criminal damage (-43), other thefts (-226), drugs offences (-193) and fraud (-55).
- There have however been increases in dwelling burglary (+151), all violent crime (+132) and burglary other (+355).

Recommendations

Recommendations are provided on the first page of each two-page section and are summarised within the prioritisation matrix on page 6.

It is recommended that the following are maintained as priorities

- Serious acquisitive crime
 - Dwelling burglary
 - Vehicle crime
- Anti-social Behaviour (focusing on)
 - Supporting ASB casework
 - Supporting neighbourhood panels
- Domestic Violence
- Reducing Offending & Reoffending
- Community cohesion

Other Policy Recommendations

- That the partnership commission a problem profile on 'other acquisitive crime' (burglary other)

Next Steps

The partnership is required to:

1. Discuss the recommendations;
2. In doing so complete the remaining parts of the prioritisation matrix;
3. In turn decide to adopt or reject each recommendation; and
4. Agree which issues to put forward for further discussion at the County Community Safety Strategic Board.

Introduction

Background

In 2006 a review was held of the partnership provisions within the Crime & Disorder Act 1998 and the Police Reform Act 2002. As a result a new set of national minimum standards for partnership working aimed at tackling crime and disorder were introduced within the Police and Justice Act 2006. These minimum standards came into force in August 2007.

The new statutory responsibilities related to the composition and duties of Crime and Disorder Reduction Partnerships (CDRPs) and relevant county level group in two tier areas. *These included a duty for partnerships to prepare an annual strategic assessment.*

In addition, the statutory responsibilities were supported by the advisory 'six hallmarks' of effective partnerships. These are:

- Empowered and effective leadership
- Visible and constructive accountability
- Intelligence led business processes
- Effective and responsive delivery structures
- Engaged communities
- Appropriate knowledge and skills

The guidance around the area of intelligence-led business processes for partnerships includes detail around the format, content and use of the strategic assessment.

Purpose

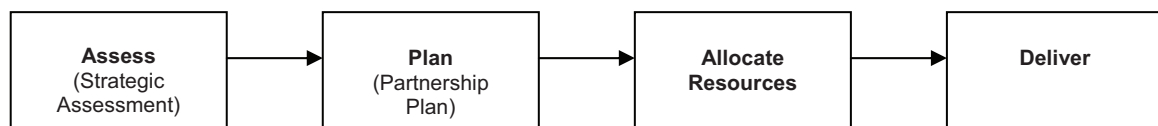
The purpose of the strategic assessment is to present and interpret a *summary* of intelligence analysis for the partnership area to assist the partnership 'strategy' group to set priorities and review the partnership plan. The statutory requirements are that the document includes:

- Analysis of the levels and patterns of crime, disorder and substance misuse;
- An indication of changes since the last strategic assessment;
- Interpretation of trends;
- An assessment of progress against the current plan

Strategic assessments were introduced to improve partnerships' understanding of the patterns of crime in their area and to enable them to respond effectively. For Cambridgeshire (because it has a two tier system of local government) each district CDRP strategic assessment will be combined into a County overview that will be presented to the County Strategic Board. The purpose of that document is to enable the identification of priorities for inclusion within the Local Area Agreement and to identify subjects that will benefit from joint working or management at a county level.

Process

A simplified version of the process within which the strategic assessment sits is shown below.



Practically the strategic assessment will be presented to each CDRP in Autumn. CDRPs will then review their current plans and priorities in light of the strategic assessment. The county strategic assessment will then be presented later in the year, where the CDRP chairs will have the opportunity to discuss county level priorities and coordinating work.

Scope

Authors

Within Cambridgeshire we have a long standing arrangement funded by both the County and District Councils that the County Council's Research Group supports each of the County's CDRPs with their research and information needs. This remit includes the production of the partnership strategic assessments and is also supported by Cambridgeshire Constabulary.

For 2009 the County Council's Research Group has led on the production of the Partnership Strategic Assessments (at both CDRP and County level). However this work has been coordinated with Cambridgeshire Constabulary's own strategic assessment process and information and analysis has been shared between the two. In addition each of the Community Safety Officers for the district councils have been involved in the planning process.

Contributors

It is the role of the strategic assessment to bring together both information and analysis from a range of partner organisations. In order for strategic assessments to be successful they need to be built on strong information-sharing arrangements. The following agencies have contributed information for the 2009 strategic assessments:

- Cambridgeshire County Council
- Cambridge City Council
- East Cambridgeshire District Council
- Huntingdonshire District Council
- Fenland District Council
- South Cambridgeshire District Council
- Cambridgeshire Constabulary
- Cambridgeshire Fire & Rescue Service
- East of England Ambulance Service NHS Trust
- Addenbrookes Hospital (Cambridge University Hospitals NHS Foundation Trust)
- NHS Cambridgeshire
- Cambridgeshire Probation Service
- Criminal Justice Board

In addition the views of members of the public have been incorporated throughout the analysis. Including a review of previous public involvement exercises; collation of views expressed at neighbourhood panels and through focus groups.

Various regional and national reports have also been used to provide contextual information.

Methodology

The process for producing the Cambridgeshire strategic assessments follows Home Office best practice guidelines.

1. Carry out initial scanning

The purpose of the scanning exercise is to identify 'emerging issues' (problems that partnerships have not previously had to face) and to consider external factors such as political or economic changes that may affect future crime trends.

2. 'Top line Analysis'

An overview of each partnership's position against current performance targets and trends in total crime. The current year refers to data recorded between Sept 08 and Aug 09. In addition we have added trend data from two of the three emergency services. Currently the East Anglian Ambulance Trust are not sharing the call out data.

3. Detailed Analysis of topics

The precise nature of each topic analysed and the structure of the analysis is guided by the

initial scanning work. Topic Analysis is supported by an overview of performance in each area.

4. Assessment of delivery.

With the support of district community safety officers an assessment has been made as to progress against current CDRP plans.

5. Public Priorities

The views of members of the public have been incorporated through a analysis of a selection of previous public involvement exercises (such as the 2008 Place Survey) and bespoke engagement exercises. Further as with previous strategic assessments a collation of views expressed at neighbourhood panels has been included.

Feedback

As with last year feedback is invited on both the strategic assessment document and on the process undertaken to consider it. Normally a review meeting is held in December following publication. To comment or ask any further questions regarding the strategic assessment then please contact Leigh.Roberts@cambridgeshire.gov.uk

PARTNERSHIP PRIORITISATION MATRIX – SOUTH CAMBRIDGESHIRE

Reasoning → Issue ↓	PRIORITY The issue is a current Priority	VOLUME Volume is high for our area	COMPARE Position with Most Similar Group	TREND The issue is deteriorating	HARM The issue causes significant harm	COMMUNITY Community engagement indicates this issue is a real concern	Initial Recommendation Priority Yes/No	Final Agreement
Acquisitive Crime								
Serious Acq Crime*	YES	YES	WORSE	YES	YES	NO	YES	
Dwelling Burglary	YES	NO	WORSE	YES	YES	YES	YES	
Vehicle Crime	YES	YES	WORSE		NO	NO	YES	
Robbery	NO	NO	IN LINE	NO	YES	NO	NO	
Other Acquisitive Crime	NO	YES	WORSE	YES	NO	NO	Problem Profile	
Violence	NO	NO	BETTER	YES	YES	NO	NO	
Alcohol related violence & disorder	NO	NO	BETTER	YES	YES	YES	NO	
Domestic violence	YES	N/A	N/A	N/A	YES	NO	YES	
Disorder								
Anti Social Behaviour	YES	N/A	BETTER	N/A	YES	YES	YES – but with a specific focus	
Criminal Damage	YES	YES	BETTER	NO	NO	YES	NO	
Arson	NO	NO	IN LINE	NO	YES	NO	NO	
Substance Misuse								
Drugs	NO	NO	N/A	N/A	YES	NO	NO	
Other Issues								
Reducing Offending	YES	N/A	N/A	N/A	N/A	NO	YES	
Shop lifting	NO	NO	BETTER	NO	NO	NO	NO	
Community Cohesion	YES	N/A	IN LINE	N/A	YES	YES	YES	
Road Safety	NO	YES	N/A	NO	YES	YES	NO	

Performance Assessment - Progress against plan

Priority – Reduce Anti Social Behaviour in the District

The table below shows the new cases referred to the ASB Task Group in 2009/10

Case Type	2009/10 Quarter 1	2009/10 Quarter 2
Individuals	9	3
Areas	3	2
Families	3	6
<i>Total</i>	<i>15</i>	<i>11</i>

Four Problem Solving Groups were held. These focused on ASB cases in Cambourne, Fen Drayton, Melbourn and Shepreth.

It should be noted that while there are resource issues currently, due to the absence of the ASB Caseworker, good partnership working has enabled the CDRP to keep the ASB caseload progressing and as a result the majority of milestone indicators within the ASB priority are green.

In particular, collaboration with Police and SCDC Housing colleagues has allowed existing Acceptable Behaviour Contracts to be reviewed and new contracts issued in cases where this is deemed necessary.

Reports of abandoned vehicles in the district are consistently being responded to within 24 hours. The Council's Corvu performance monitoring system shows all statistics for this exceed 95% of cases being responded to within this time.

The positive partnership working extends to work around involving licensing colleagues taking preventative measures in terms of ASB. SCDC Licensing colleagues take an active part in the ASB Task Group meetings, taking forward referrals to carry out spot checks on premises thought to be conducting under-age sales that are contributing to incidents of ASB.

Approximately 10-15 such spot checks on licensed premises were carried out during Quarter 1. Quarter 2 statistics are still awaited.

The SCDC Licensing Team also carried out one multi agency visit to licensed premises in conjunction with CDRP Partners (Police and Fire Services) during quarter 1. Quarter 2 information still awaited.

Red indicators which need to be addressed within the Reducing ASB priority relate to:

- Revising the district ASB Strategy – this is due to sick leave of caseworker.
- Investigate setting up intensive family support – this needs taking forward with the DV Task Group at the next meeting (due to be held in November).
- Setting up of a visual audit working group and undertaking of visual audits to remove opportunities for crime. The CDRP have attempted to engage with a number of Parish Councils in order to carry out these visits and there was an encouraging level of response with 5 Parish Councils expressing an interest in taking part, however considerable attempts have been made to set up meetings, without success.

Priority - Reducing Re-Offending in the District

The PPO Scheme co-ordinator is actively engaged within the work of the CDRP, attending appropriate Task Group Meetings, such as Anti-Social Behaviour to strengthen the work of the Partnership. The same co-ordinator looks after the City and East Cambs PPO schemes, so there are good links between those schemes. The County PPO group ensures information

is shared and links established with the other PPO schemes in the County, Fenland, Hunts and Peterborough.

The CDRP has contributed £500 towards the work of the PPO scheme.

In quarter 1, there were 10 PPOs registered on the scheme within South Cambs. 3 on the Deter strand and 7 on the Catch and Convict/Rehabilitate and Resettle strands. Quarter 2 stats awaited.

The Partnership made use of systems for referring offenders to Drug and Alcohol Treatment Services. During quarter 1, 4 cases were referred for alcohol treatment and 2 under the IDAP programme.

Performance Indicators that were rated as 'Red' and need addressing in the year to date are:

- Seek to secure long-term funding for entire PPO scheme. No information is available in terms of progress against this at the present time.
- Investigate the feasibility of setting up a Rent Deposit Scheme for PPOs providing housing advice for offenders. This is being looked into by the Housing Needs Manager and a response is awaited
- Establish a dialogue between partners to set up a Cambridgeshire Offender Accommodation Forum. This is being looked into via Regional Housing Forums and in conjunction with Police colleagues. A response is awaited

Priority – Reduce the number of incidents of Domestic Violence in the district

10 cases referred to the Southern Division Multi-Agency Risk Assessment Conference (MARAC) in Q1 involved victims from South Cambs. (Q2 figures awaited).

During Q2, there were 45 high-risk cases referred to the county Domestic Abuse Unit by the Police. Q1 Figures unavailable.

South Cambridgeshire CDRP is actively involved in the joint Domestic Violence Task Group (DVTG) with the City. A number of issues are currently being explored by the Task Group, including provision of training for practitioners across the two districts, a Domestic Violence Awareness Event, which is likely to take place in March 2010. A planning sub-group of the DVTG, with representatives from both districts, County Council and other partner organisations has recently been formed to organise this event.

The group is also looking at allocating funding towards a DV alarm system, which could be linked to mobile phone GPS technology, to replace the 'Jackpot' alarms.

The group is funding the reprinting of its DV service contact cards and is looking to improve its web-based directories.

Performance Indicators linked to this priority that are currently rated 'red' are:

- Develop toolkit to assess effectiveness of DV Services. This is under discussion by the joint City/South DV Task Group
- Run a Young People's Freedom Programme. This had been arranged for Cambourne during Q1, but did not take place due to lack of numbers wanting to take part. The group may need to look at how to better facilitate this to encourage young people to take part.

Priority – Reducing Burglary in the District

The Burglary and Vehicle Crime task groups have been amalgamated this year to form the Serious Acquisitive Crime Task Group, which meets every two months. This includes representatives from District Council, Police and Trading Standards.

The CDRP has allocated £6k funding for joint work with the Housing department to improve home security in the district.

Dwelling burglary offences have decreased in South Cambridgeshire during July & August in comparison to the previous period but remained stable compared to the same period last year.

South Cambridgeshire Dwelling Burglary Offences

Period	Jul-Aug 09	May-Jun 09	Jul-Aug 08
Offences	76	96	76

There were reductions to SAC levels in Great Shelford and Linton during Q1. Great Shelford reductions are the result of a known persistent offender being given custodial sentence.

The CDRP distributed a home security awareness leaflet to all residents in the district via the quarterly SCDC magazine during Q1. Home Security messages are being delivered by police and fire service to residents in the district, at events such as Neighbourhood Panels and themed police road shows and through the E-Cops system, with feedback from Neighbourhood Panels as to how the distribution of information can be enhance, being taken forward. The CDRP has provided the Fire Service with £3k funding for the purchase of laptops to carry out home security audits.

The county Homeshield scheme is expanding in terms of partner organisations joining the scheme to take on referrals from other agencies visiting elderly or vulnerable residents, as a result of workshops held to raise awareness of the scheme. In Q1, there were 13 successful referrals of South Cambridgeshire residents made by a partner agency to another for services required. Q2 Stats awaited.

The CDRP have funded the purchase of Smart Water kits by the Police for distribution to burglary victims in the district.

Bobby Scheme representatives are asking all victims that they visit if they have had any doorstep sellers or cold callers at their home.

26 No Cold Calling Zones have been established in the district, aimed at enhancing home security by reducing incidents of distraction burglary.

A joint workshop for Planning Officers and Police on home security issues was held in July 2009. This was jointly arranged by the CSO, Police Sector Inspector and the District Council Planning Department.

Areas of concern against this priority continue to be volume of burglary, which is in line with county and national statistics.

Priority – Reduce Vehicle Crime in the District

As above, the Vehicle Crime Task Group has been amalgamated with the Burglary Task Group, to form the Serious Acquisitive Crime Task Group, which meets every two months. This includes representatives from District Council, Police and Trading Standards.

Home Office data showed that Vehicle Crime in South Cambridgeshire in Q1 was reduced compared to the same period in the previous year.

Information has been distributed to residents in the same way as that on Home Security, with suggestions being taken on board as to how this can be better enhanced.

The partnership has not held any vehicle crime road shows as yet, but plans to do so later in the year. Information on this theme is distributed at other events, such as Neighbourhood Panels and 'The Streets' initiatives.

Strategic Overview – All Crime

The table below shows change in selected crime types and groupings (for a full report on all crime types please refer to CORA, the Constabulary performance reporting system where these figures are derived).

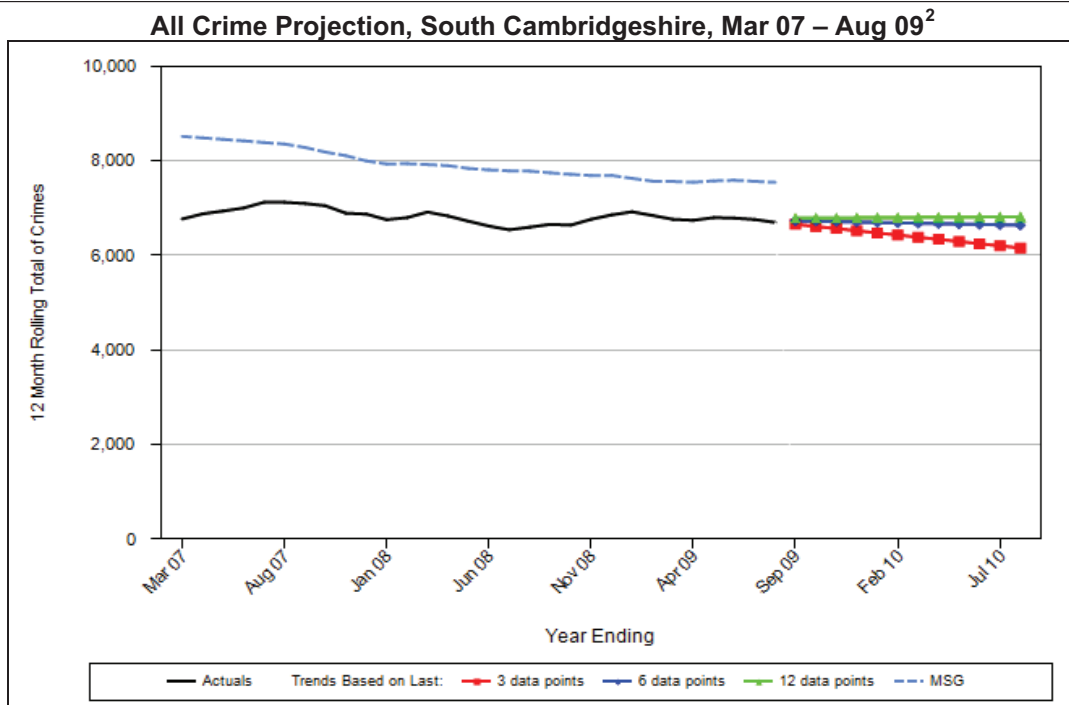
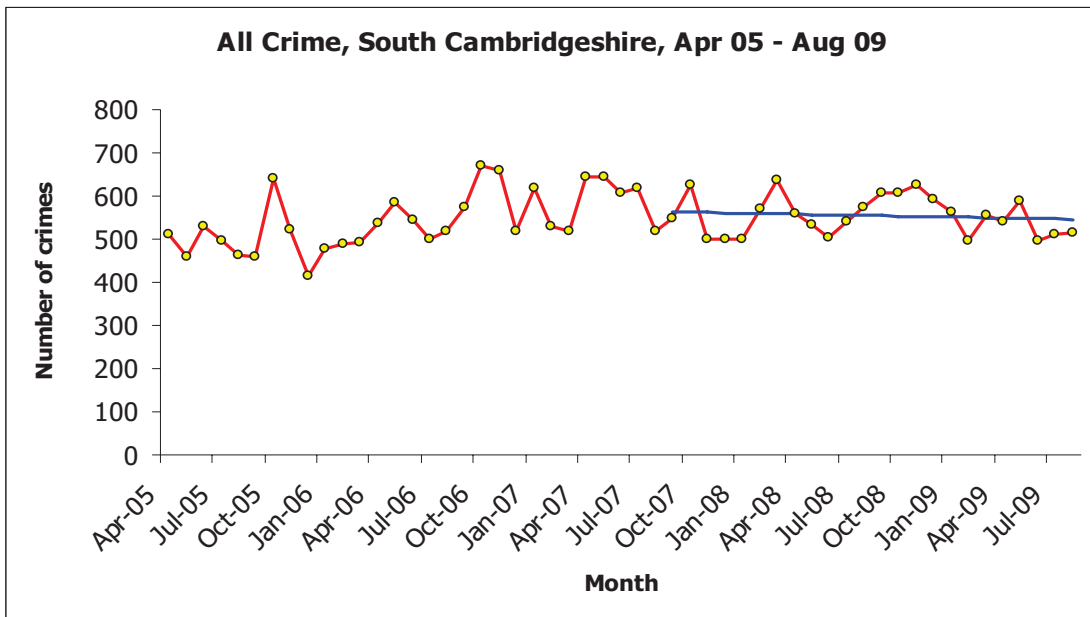
	Sept 07 to Aug 08	Sept 08 to Aug 09	Direction of Change	Volume Change	% Change
All Crime	6595	6695	▲	100	1.5%
Serious Acquisitive Crime	1429	1542	▲	113	7.9%
Burglary Dwelling	410	561	▲	151	36.8%
All Robbery	41	41		0	0.0%
Robbery (Business)	8	14	▲	6	75.0%
Robbery (Personal)	33	27	▼	-6	-18.2%
All Vehicle Crime	978	940	▼	-38	-3.9%
Vehicle Taking	218	198	▼	-20	-9.2%
Theft from a Vehicle	760	742	▼	-18	-2.4%
All Violent Crime	846	978	▲	132	15.6%
Most Serious Violence ¹		41			
Assaults With Less Serious Injury	335	370	▲	35	10.4%
All Sexual Offences	73	86	▲	13	17.8%
All Other Wounding	339	379	▲	40	11.8%
All Common Assault	217	262	▲	45	20.7%
All Harassment	107	137	▲	30	28.0%
All Criminal Damage	1370	1327	▼	-43	-3.1%
Arson	76	48	▼	-28	-36.8%
Burglary Other	610	965	▲	355	58.2%
Shoplifting	124	137	▲	13	10.5%
Theft from the Person	26	16	▼	-10	-38.5%
Theft in a Dwelling	71	76	▲	5	7.0%
Theft of Pedal Cycles	209	242	▲	33	15.8%
Other Thefts or Unauthorised Taking	939	713	▼	-226	-24.1%
Other Classified Thefts & Handling	32	44	▲	12	37.5%
Fraud & Forgery	246	191	▼	-55	-22.4%
All Drugs Offences	501	308	▼	-193	-38.5%
All Racially Aggravated Crime	17	30	▲	13	76.5%

¹ New category

Trend and Volume – Overview

Over the last 12 months total crime in South Cambridgeshire has increased by 1.5% (100 offences). There have been increases in many types of crime, notably Violent Crime, Burglary Other and Dwelling Burglary. However, there have been decreases in Drugs Offences, Fraud and Forgery and Other Thefts or Unauthorised Taking.

The long-term projection for the partnership is mixed, with the trend based on the last 12 months suggesting a constant level of total crime, and the projections based on the last 3 and 6 months predicting a decrease.



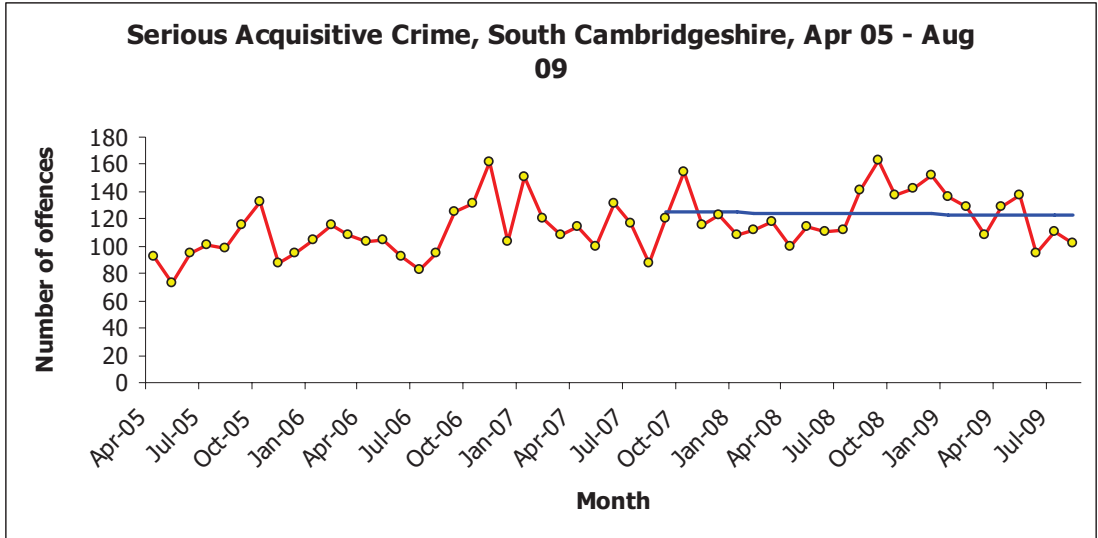
² Source: iQuanta

SERIOUS ACQUISITIVE CRIME

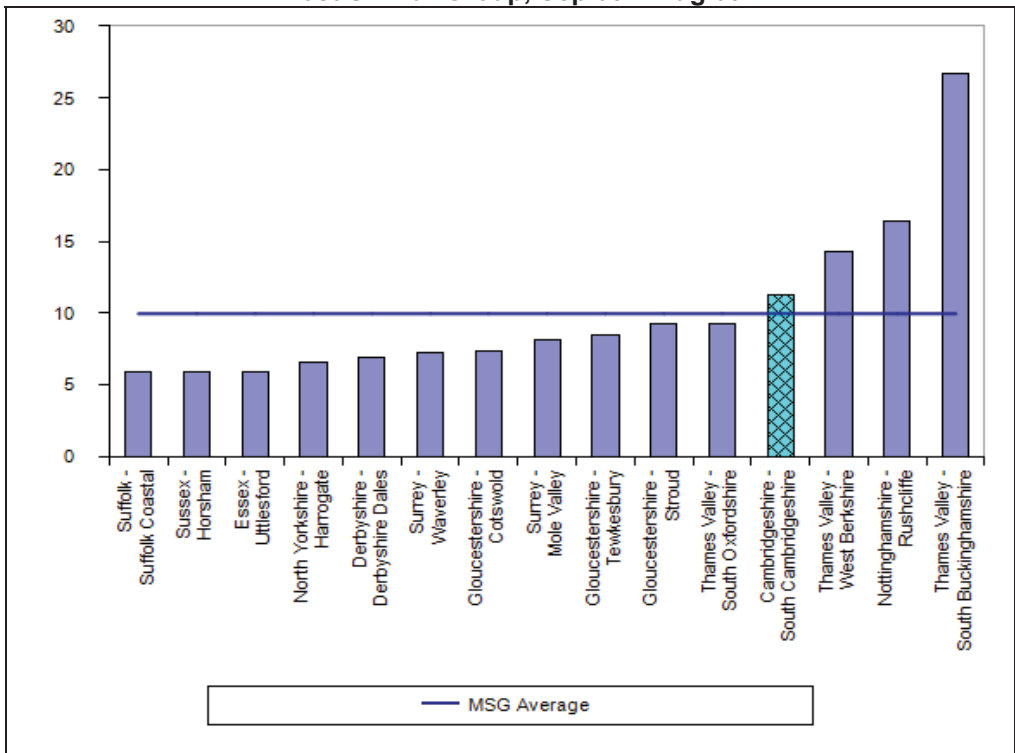
Recommendations

It is recommended that the South Cambridgeshire CDRP continue to prioritise serious acquisitive crime.

Current Performance



Serious Acquisitive Crimes per 1000 Residents, South Cambridgeshire Most Similar Group, Sep 08 – Aug 09



ANALYSIS – Serious Acquisitive Crime

Overview

The Serious Acquisitive Crime category includes all forms of dwelling burglary, vehicle crime and robbery. A summary of the trends in relation to each of these is as follows:

- Dwelling Burglary has increased by 36.8% (151 crimes) since Sept 07 - Aug 08. A more detailed analysis section follows.
- Vehicle Crime has decreased by 3.9% (38 crimes) in the last year. A more detailed analysis section follows.
- Robbery has stayed constant in the past year.

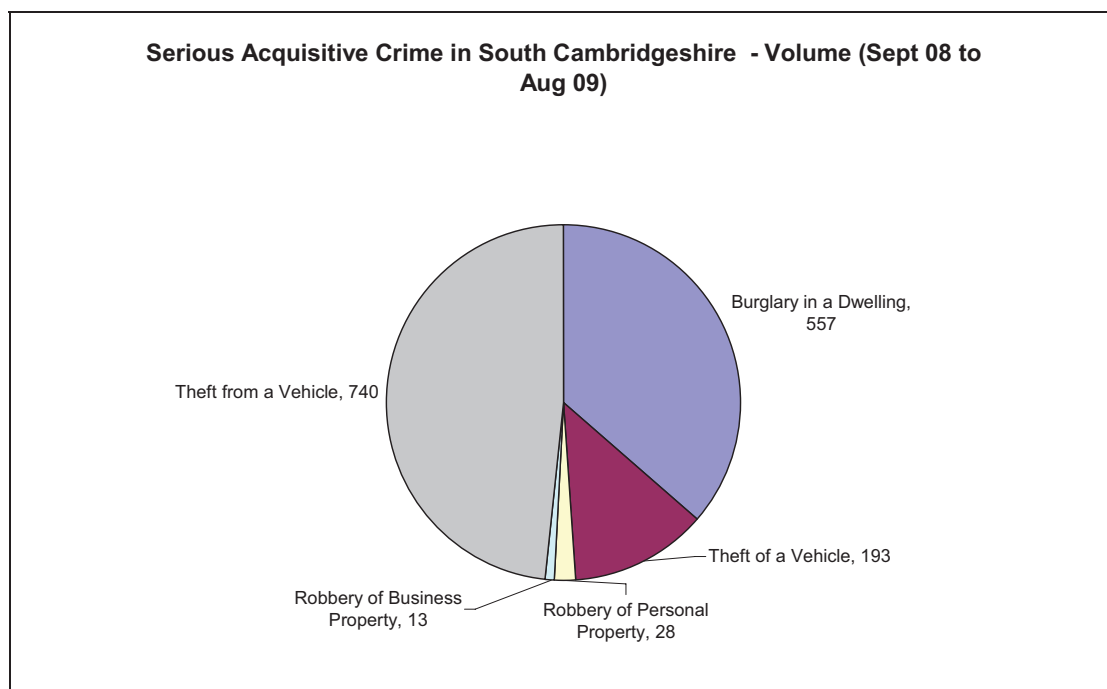
There were 1,542 Serious Acquisitive Crimes recorded between Sep 08 and Aug 09. The two-year trend line on the previous page shows that Serious Acquisitive Crime has slightly decreased in South Cambridgeshire.

South Cambridgeshire is ranked in 12th position out of 15 amongst its most similar group for Serious Acquisitive Crime.

Crimes by type

The chart below shows the proportion of different crime types that combine to make up the Serious Acquisitive Crime category between Sep 08 and Aug 09.

Theft from a Vehicle accounts for 48.3% of Serious Acquisitive Crime, which is higher than the Cambridgeshire average for CDRPs. 36.4% of Serious Acquisitive Crimes in South Cambridgeshire are in the Burglary in a Dwelling category, which is similar to the average for CDRPs. Robbery of Personal Property accounts for a lower percentage of Serious Acquisitive Crimes (1.8%) than the average for CDRPs. Theft of a Vehicle represents 12.6%, a slightly lower proportion than average.

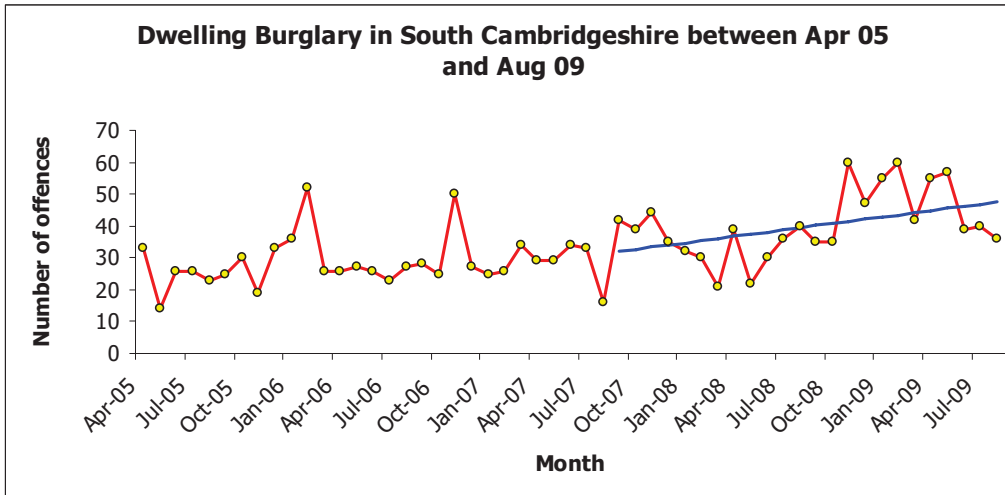


DWELLING BURGLARY

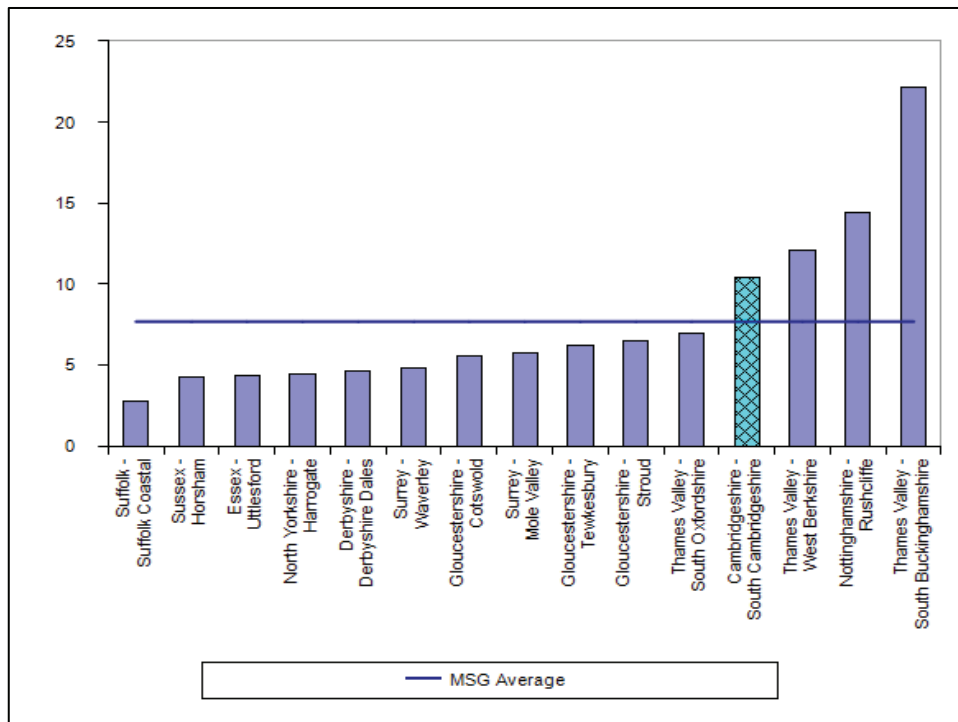
Recommendations

It is recommended that the South Cambridgeshire CDRP continue to prioritise dwelling burglary.

Current Performance



Domestic Burglary per 1000 households, South Cambridgeshire Most Similar Group, Sep 08 – Aug 09



ANALYSIS – Dwelling Burglary

There has been a 37% increase comparing Sept 08 to Aug 09 with Sept 07 to Aug 08. The number of offences this year was 561, an increase of 151 burglaries. The partnership is still in 12th position within its most similar group and the rate is poorer than the group average.

Location

Increases were not seen uniformly across the district with four wards seeing large increases these were; Histon & Impington (32 offences), Bourn (26 offences), Cottenham and Girton (both recording 21 offences more).

Distraction Burglaries

South Cambridgeshire recorded 15 distraction burglaries in the last twelve months (Sept 08 to Aug 09). This is a decrease of 10 offences since last year.

Victim Profile

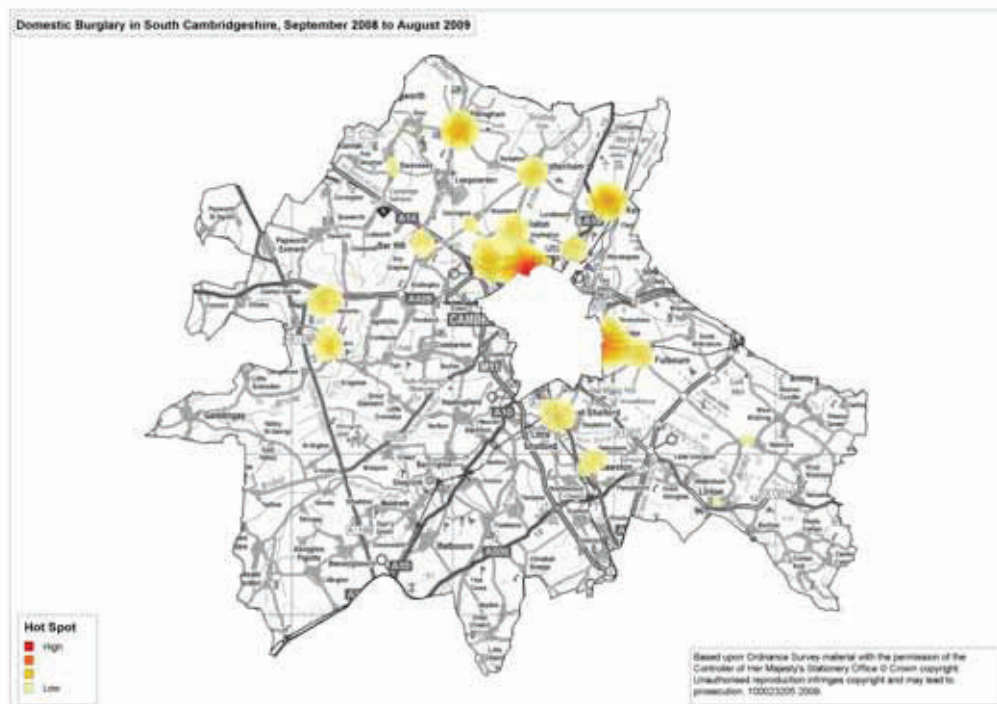
This type of crime is home based, so it is straightforward to build a MOSAIC profile of the victims of burglary in South

Cambridgeshire. MOSAIC is a household classification tool that splits different types of household into different groups.

This profile identifies that the most burgled household groups are A, C and B.

- A: Career professionals living in sought after locations
- C: Older families living in suburbia
- B: Younger families living in newer homes

It is unsurprising that 30.5% of victims are in Group A, as these households form 33.6% of households in South Cambridgeshire. Also, households in Group C accounted for 19.4% of burglaries, and comprise 20.7% of households in South Cambridgeshire. In contrast, households in Group B were the victims of 15.7% of the burglaries, but 20.3% of households in South Cambridgeshire fall under this classification.

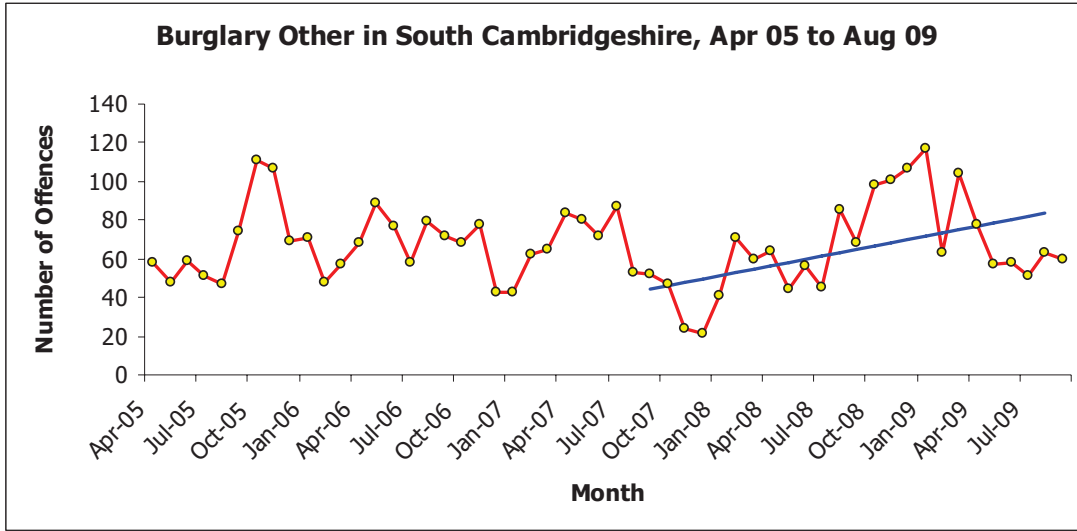


BURGLARY OTHER

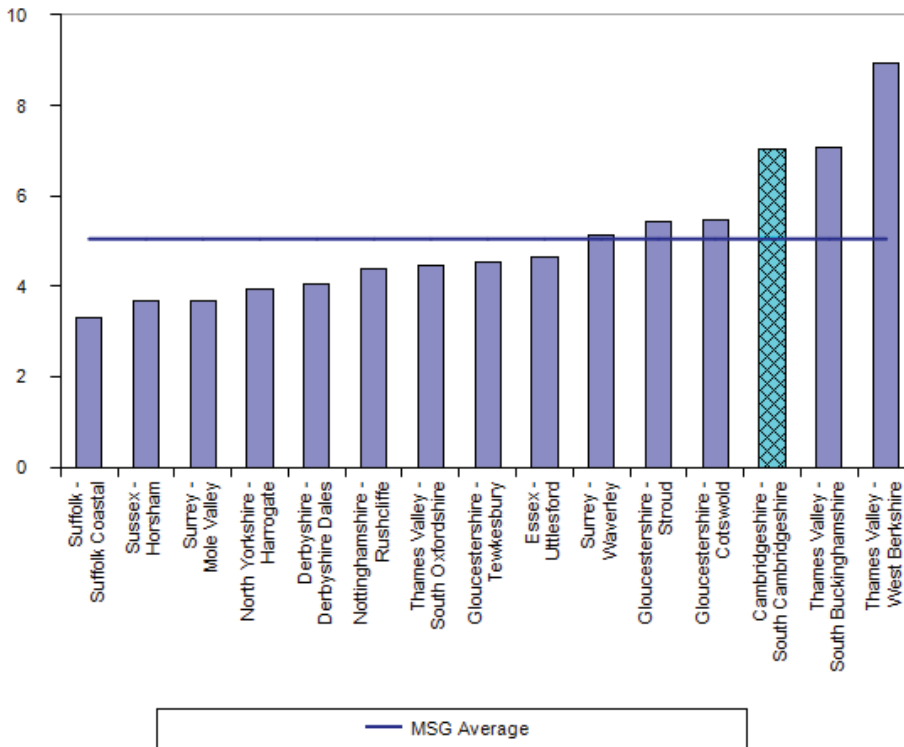
Recommendations

It is recommended that the South Cambridgeshire CDRP does not prioritise burglary other but does commission a further problem profile.

Current Performance



Non-domestic Burglary, South Cambridgeshire Most Similar Group, Sep 08 – Aug 09



ANALYSIS – Burglary Other

Overview

Burglary other has increased by 58% since last year, this is a total of 355 additional offences. The partnership is in position 13 of 15 in its most similar group and the rate is noticeably above the group average.

Types of burglary

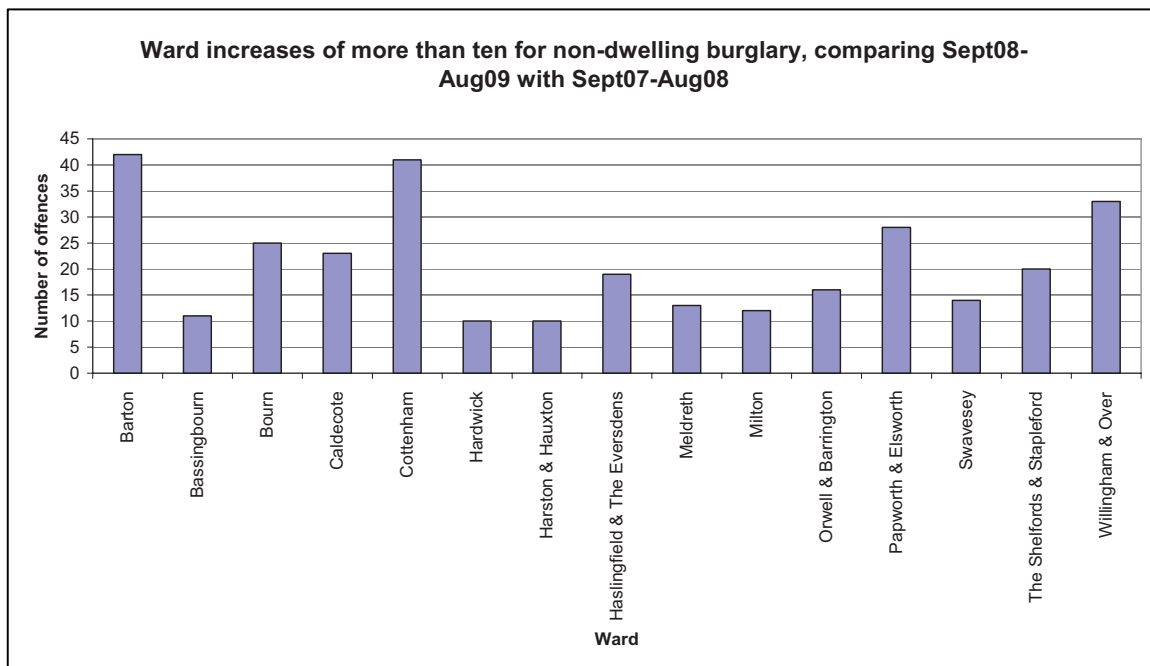
Burglary other includes two categories, shed/garage burglary and burglary other than in a dwelling. For the period Sept 08 to Aug 09, shed/garage burglaries account for 39%, whilst burglary other than in a dwelling accounts for 61% of the offences. This split in offence type is also seen in Cambridge City. Since last year there has been an increase of 55% (+132 offences) in shed/garage burglaries. Over the same time non-dwelling burglaries increased by 60% (+215 offences). Burglary other than in a dwelling usually refers to public or commercial buildings (including shops and farms).

Location

The picture across the district is mixed, with seven wards recording decreases. The chart below shows those wards that recorded an increase of 10 or more comparing Sept 08 to Aug 09 with the same period in the previous year. The four wards recording the highest numbers for this year are as follows;

- Bourn – 65
- Willingham & Over – 61
- Cottenham – 60
- Barton – 53

Barton and Willingham & Over recorded the highest increases.

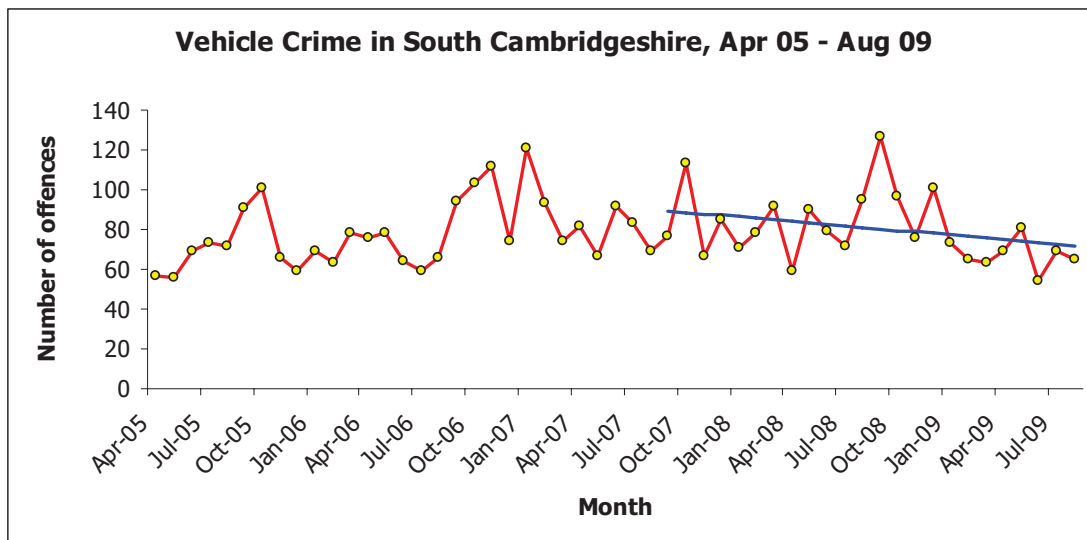




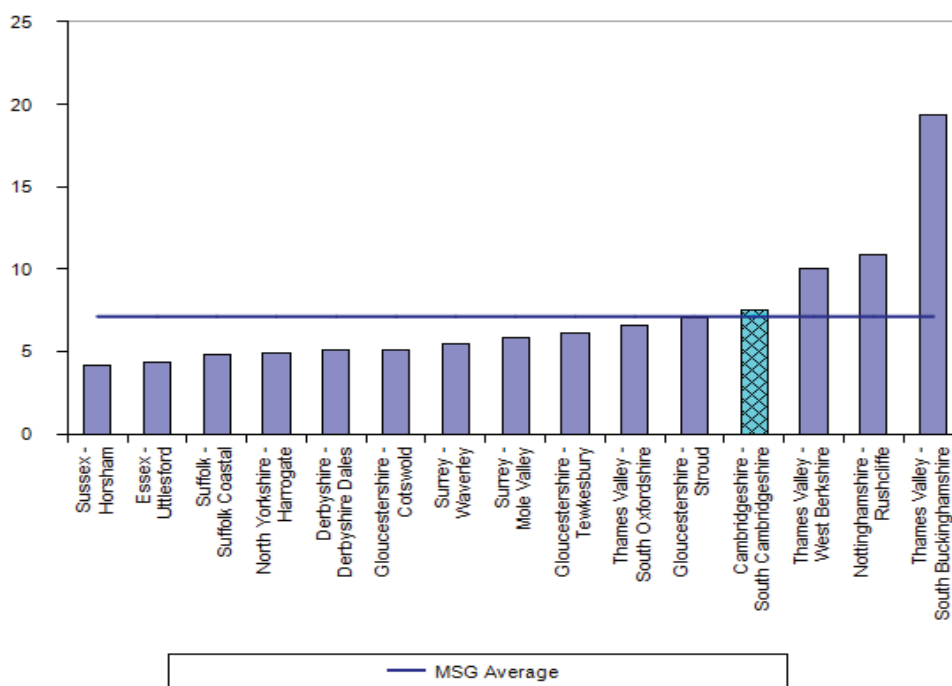
Recommendations

It is recommended that South Cambridgeshire partnership continues to prioritise vehicle crime.

Current Performance



Vehicle Crimes per 1000 residents, South Cambridgeshire Most Similar Group, Sep 08 – Aug 09



ANALYSIS – Vehicle Crime

Overview

Over the previous 12 months vehicle crime has decreased in South Cambridgeshire.

- Theft of vehicles has fallen by 9% from 218 crimes between Sep 07 and Aug 08 to 198 this year.
- Theft from vehicles has fallen by 2% from 760 crimes in the previous year to 742 this year.
- Vehicle interference has fallen by 11% from 98 crimes last year to 87 this year.

Theft of Vehicles

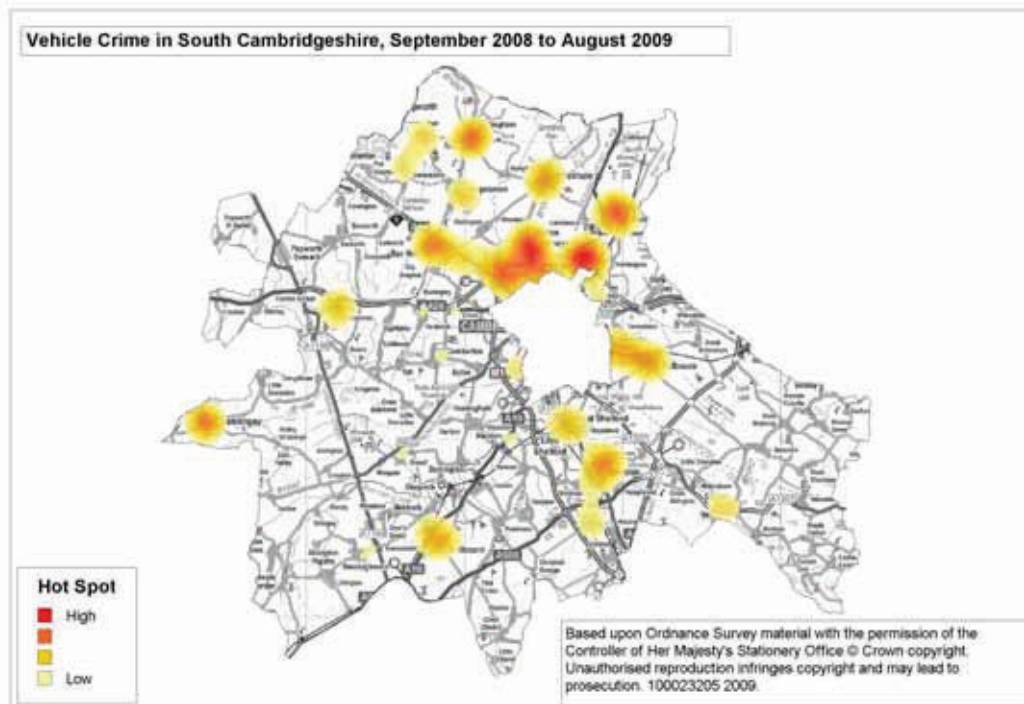
Overall the rate of theft of vehicle offences is high compared to the most similar group. The partnership is in 11th position, with 15th being the worst.

Theft from Vehicles

This crime type has the highest volume among the 'serious acquisitive crime' categories (48% of the total number). The volume of offences has decreased by 2% compared to the previous year, but the position against the most similar group is still poor. The partnership is in 12th position.

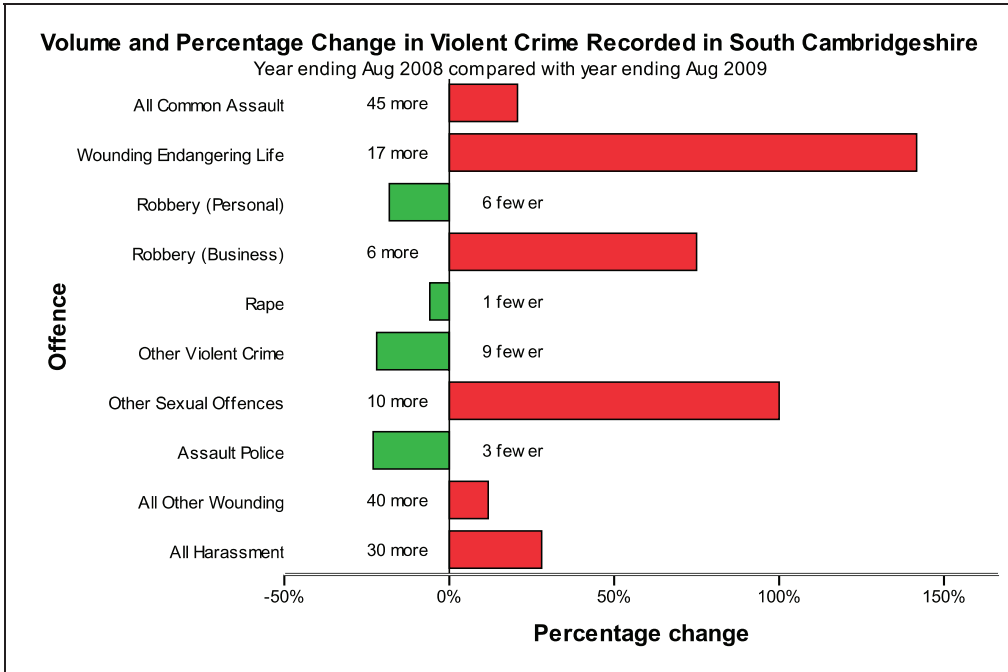
Location of Vehicle Crime

Histon and Impington ward had the highest number of vehicle crimes (88) in the year Sep 08 to Aug 09. Three other wards had more than 60 crimes; Willingham and Over ward (67 crimes), Bar Hill ward (66) and Milton ward (64).

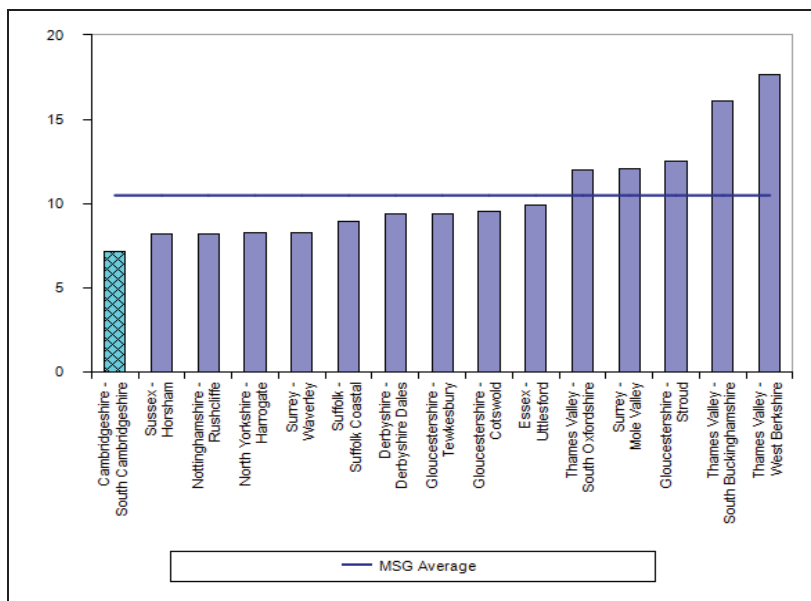


VIOLENT CRIME

Recommendations:
 It is recommended that the South Cambridgeshire CDRP does not prioritise violent crime.



Violent crimes per 1000 residents, South Cambridgeshire
 Most Similar Group, Sep 08 - Aug 09



ANALYSIS – Total Violent Crime

Overview

In South Cambridgeshire there were 978 violent crimes recorded between September 2008 and August 2009. This represents an increase of 15.6% on the previous year (846 crimes). Over the same period, violent crime with a domestic violence marker increased by 59% from 134 to 213.

Crimes

Of South Cambridgeshire’s 978 violent crimes last year, 80% were common assault³, other wounding or harassment, 1% higher than the previous year.

Over the last two years South Cambridgeshire has seen a significant increase in recorded violent crime. However, South Cambridgeshire is still ranked in 1st position in its most similar group for violent crime, the same position as last year⁴.

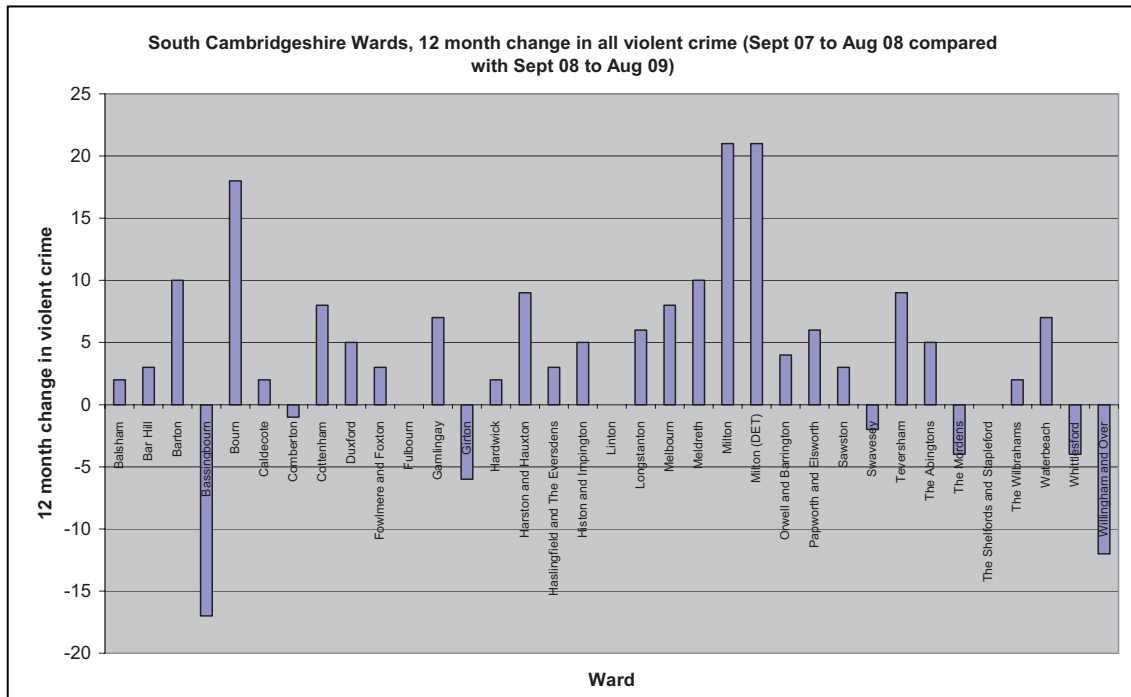
41 offences were reported in the new recording category of Most Serious Violence. This category now takes note of the intent of the crime, not just the seriousness of injury sustained, and as a result many crimes previous classified as Assault with less Serious Injury now fit under the new classification.

However, Assault with less Serious Injury has also increased by 10.4% this year in South Cambridgeshire.

Locations

Histon and Impington is the ward with the highest volume of violent crimes – 81 in the last year. Five other wards had more than 50 crimes in the last year: Bassingbourn (74 crimes), Bourn (69), Sawston (61), Fulbourn (53) and Cottenham (53).

In terms of change, the wards with the highest increase were Milton, Milton (Det) and Cambourne. In Milton a brief analysis has identified that there was a general increase in violent crime, including at major supermarkets, institutions etc, but this did not appear to be alcohol related night-time violence. The increase within the other two wards were explainable and could be related to some very specific circumstances and any not linked to alcohol related night time violence.



³ Excluding assaults on police officers

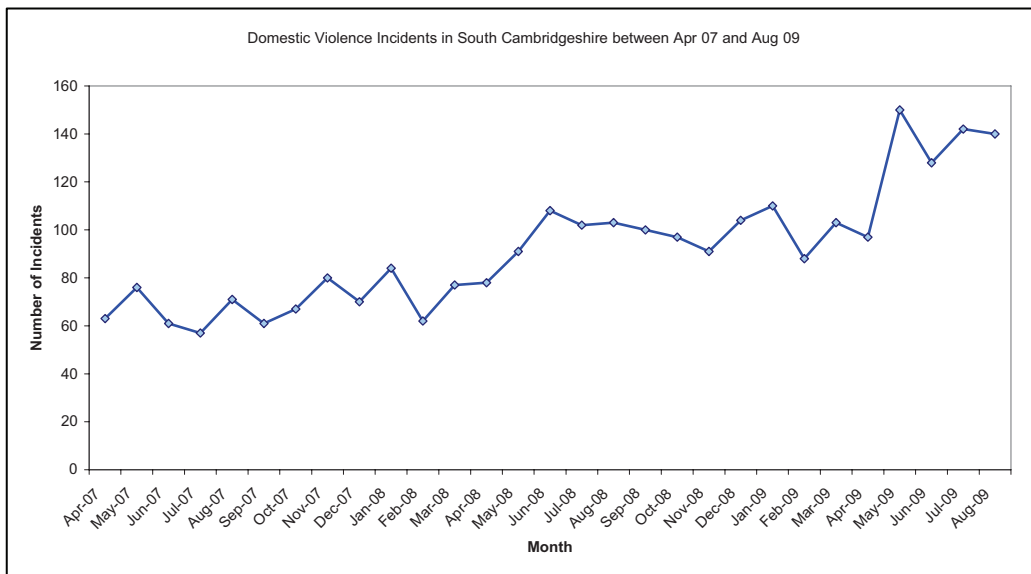
⁴ See technical notes relating to Most Similar Groups

DOMESTIC VIOLENCE

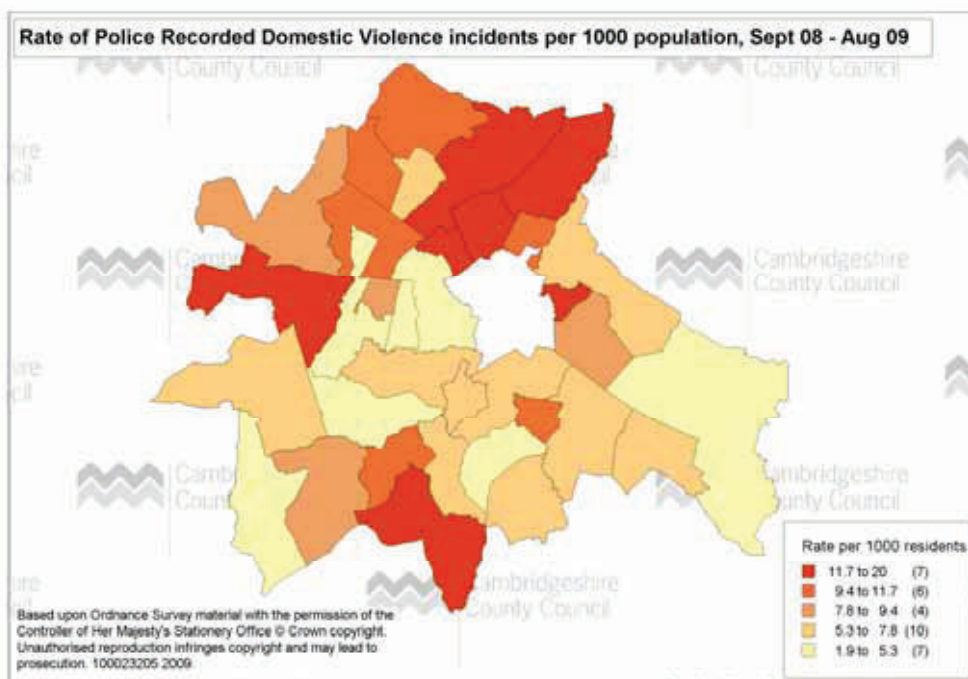
Recommendations

It is recommended that the South Cambridgeshire CDRP continue to prioritise domestic violence.

Current Performance



South Cambridgeshire recorded a 37% increase in the number of police recorded domestic violence incidents since last year. The total number of incidents recorded between Sept 08 and Aug 09 was 1,350.



Multi-Agency Risk Assessment Conference (MARAC)

This is the first year in which we have been able to include the MARAC data within the strategic assessment. 2008/09 was the baseline setting year for the National Indicator (NI) 32, therefore data is not available prior to April 2008.

The target for NI 32 is that the repeat rate should not be higher than 28%. The county currently remains on target with a repeat rate of 25.5% for rolling year ending Aug 09. The total number of MARAC cases for 2008/09 was 271. In the last 12 months there have been 327 cases. There has been rise in demand for this service, which is in line with national research.

Targets around increasing referrals to the MARACs from agencies other than the police and IDVAS have now been agreed. South Cambridgeshire's target is to increase by 50% (from a baseline of 3 for 2008/09) by April 2010.

Independent Domestic Violence Advocacy Service (IDVAS)

The IDVAS work with high-risk cases across the county referred from Cambridgeshire Constabulary. The table below breaks down the last twelve months by quarter and shows the total for the county.

CDRP	2008/09 Q2	2008/09 Q3	2008/09 Q4	2009/10 Q1	12 month total
South Cambridgeshire	65	36	43	46	190
<i>Cambridgeshire</i>	<i>496</i>	<i>331</i>	<i>332</i>	<i>366</i>	<i>1,525</i>

Vulnerable Adults

27% of suspected vulnerable adults cases from 2008/09 were marked with a perpetrator as Partner or Other Family Member. This amounts to 237 potential domestic abuse cases in contact with vulnerable adults services.

Children & Young People

The total number of contacts relating to children & young people and concerns about domestic violence recorded by Cambridgeshire County Council's contact centre for 2008/09 was 1,697 for the county. Of these, 279 related to residents of South Cambridgeshire. This equates to a rate 8.2 children/young people per 1,000 population. This is lower than the county average of 12.2 per 1,000 children & young people.

The table below shows the number of DV reports sent from the constabulary to education services. It should be noted that it is not a unique dataset of children and is likely to contain duplicates.

	DV Reports	School Age Children	Letters to Schools
2006-2007	1506	2096	1213
2007-2008	2022	2664	1960
2008-2009	1893 (44 weeks)	2774 (44 weeks)	2086 (44 weeks)

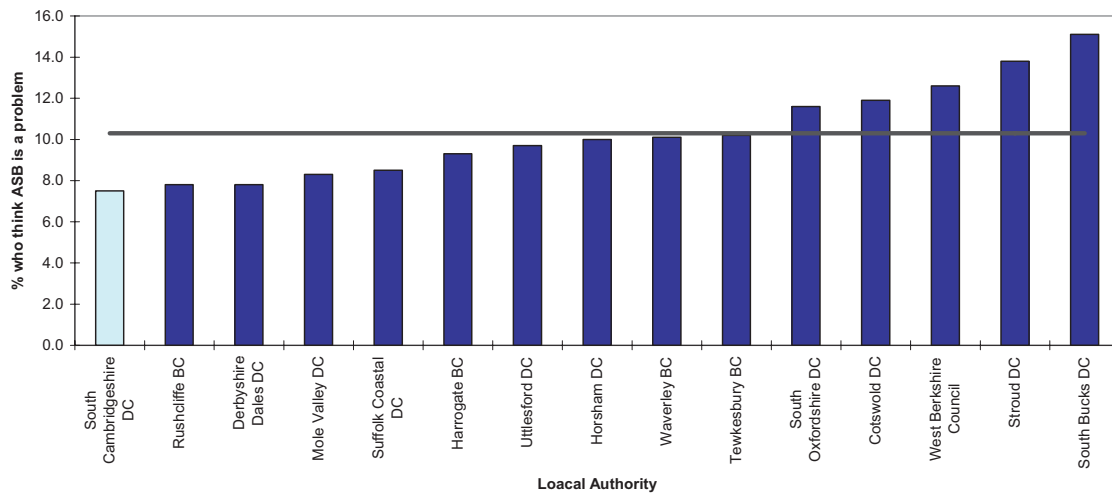
ANTI-SOCIAL BEHAVIOUR

Recommendations

It is recommended that anti-social behaviour remains a priority. However, given the relatively low levels of anti-social behaviour in the area the partnership should prioritise supporting anti-social behaviour casework and initiatives to reduce ASB that arise through neighbourhood panels.

Current Performance

Percentage of people who think Anti-Social Behaviour is a problem
(National Indicator 17 - Place Survey 2008)
Comparison with Most Similar Group NI 17



Public Perception

In terms of public perception (using the 2008 Place Survey), South Cambridgeshire is in a much better position compared to its most similar group for NI 17 – The percentage of people who think anti-social behaviour is a problem. The results showed that only 7.5% of respondents thought overall ASB was a problem. This is the lowest result in the country. A similar proportion (8.6%) thought that drunk and rowdy behaviour was a problem. This is also better than the most similar group average. The results for South Cambridgeshire were the lowest in the county.

Percentage of residents who believe the following are fairly or very big problems	Place Survey 2008		
	South Cambridgeshire	Cambridgeshire	Median across all local authorities in England
Noisy neighbours or loud parties	6.2%	9%	14%
Teenagers hanging around on the streets	26.1%	34%	43%
Rubbish and litter lying around	21.3%	27%	37%
People being drunk or rowdy in public spaces	8.6%	23%	29%
Vandalism, graffiti and other deliberate damage	20.9%	27%	33%
Abandoned or burnt out cars	3.7%	5%	7%
People using or dealing drugs	13.1%	24%	31%

Young People

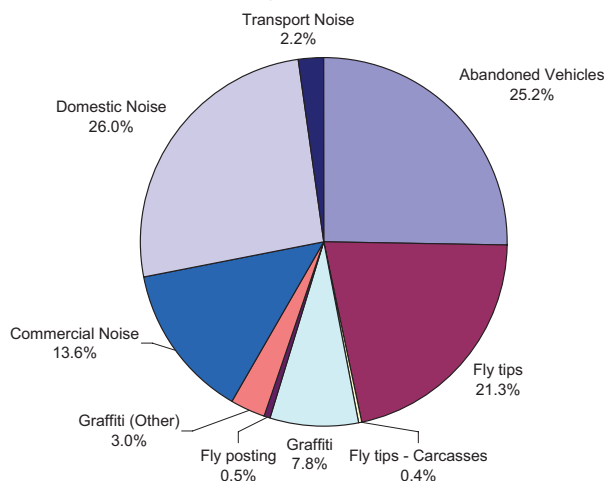
As part of the Big Plan, a series of consultations were held with young people over the last couple of years. Issues raised included:

- The need to provide safe areas to play
- Reducing Alcohol and drug use
- Being frightened of older teenagers
- The biggest issue preventing young people accessing extended services was the fear of bullying and intimidation.
- Drug and alcohol misuse were particularly highlighted as a major issue for young people in Huntingdonshire.

District Data

There were 860 complaints reported to the district council between August 2007 and July 2008. For the same period this year, this increased to 1185.

ASB and Environmental Incidents in South Cambridgeshire, August 2007 - July 2009



Location

The highest number of complaints from August 2007 to July 2009 were about incidents in Bourn ward, which received 183 complaints (9% of the total number). Fulbourn had 102 complaints (5%), followed by Sawston with 93 (5%).

- Bar Hill received the highest number of complaints about abandoned vehicles (26).
- Duxford had the most reported problems with commercial noise (34)
- The majority of incidents, 76%, in Bourn ward took place in Cambourne (139 of the 183 complaints).

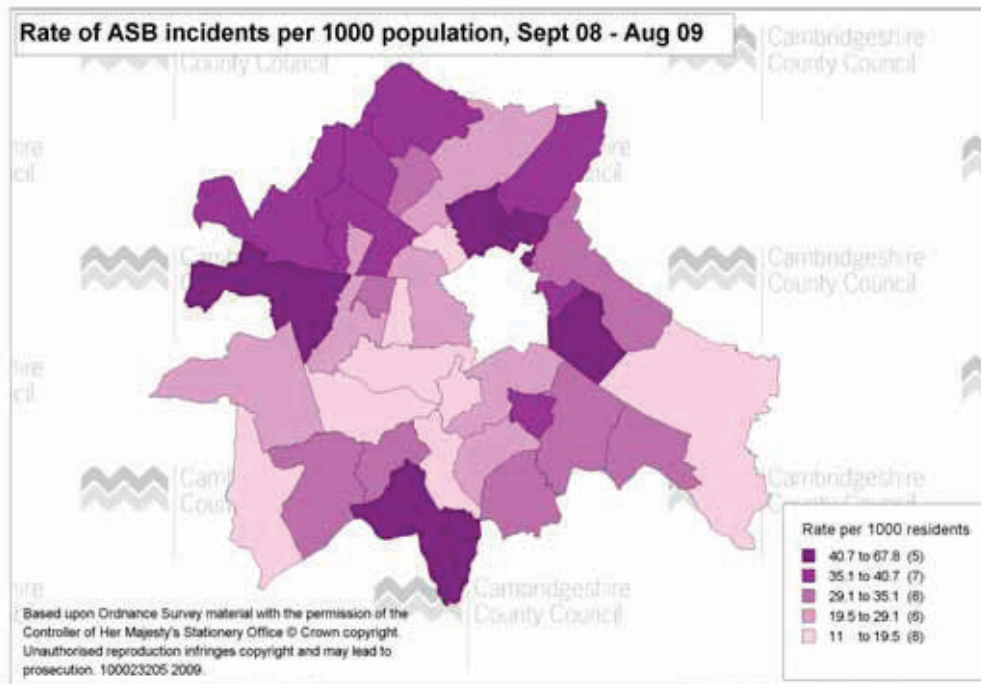
There were 55 cases of anti-social behaviour in South Cambridgeshire between September 2008 to August 2009. These cases were distributed throughout South Cambridgeshire, with no village having significantly more cases than any other. The majority of cases (53%) relate to adults, whilst others concern entire families. A small number of cases are the subject of ABCs or ASBOs. 47% of cases (26) have been referred to the task group, these tend to be the most serious cases. 73% of cases involve tenants of South Cambridgeshire District Council Housing Services. CDRP case workers have been involved in 36% of the total number of cases.

Police Recorded Incidents

In South Cambridgeshire over the past year there were 4,908 incidents of anti-social behaviour. This is a decrease of 12% compared to the previous year (although it

should be noted that trends in incidents are influenced by changes in recording and public propensity to report incidents when they happen.) More than 55% were categorised as rowdy and inconsiderate behaviour. 14% were vehicle related nuisance /inappropriate vehicle use.

Fulbourn ward had the highest rate of anti-social behaviour in the period September 2008 to August 2009, with 67.8 incidents per 1000 residents. Milton ward had the second highest rate (66.4 per 1000) and Histon and Impington ward was third highest (60.8 per 1000).



Arson

Fire Service data shows that South Cambridgeshire district recorded the greatest reduction in the county in recorded deliberate fires (13.4%). This is a reduction from 186 recorded between Sept 07 and Aug 08 to 161 incidents between Sept 08 and Aug 09. The district recorded the second lowest number of fires in the county this year.

Criminal Damage

In South Cambridgeshire the number of criminal damage offences has decreased by 3.1%, from 1,370 crimes in the year from Sep 07 to Aug 08, to 1,327 between Sep 08 and Aug 09. Criminal damage to both Dwellings and Buildings has decreased, Other Damage is unchanged, and Damage to Vehicle has increased by 3.6% (589 to 610 crimes) in the same time period. The district is in position 4 in its most similar group. The ward with the highest number of offences is Histon and Impington, with 168 crimes last year.

Neighbourhood Panel Area Priorities

Neighbourhood Policing is provided by teams of police officers and Police Community Support Officers (PCSOs), often together with Special Constables, local authority wardens, volunteers and partners⁵. Priorities for the Neighbourhood Policing Areas (NPA) since quarter 2 2008/09 in South Cambridgeshire are included in the table below, those marked in grey were the priorities most recently selected.

⁵ Neighbourhood Policing: <http://www.neighbourhoodpolicing.co.uk/>

- Each of the neighbourhood Policing Areas has reported a wide range of ASB. and crime issues as priorities (as many as 8 or 9 issues).
- Speeding of motor vehicles is an issue for all areas.
- Burglary Dwelling is the principal crime issue for most neighbourhoods.

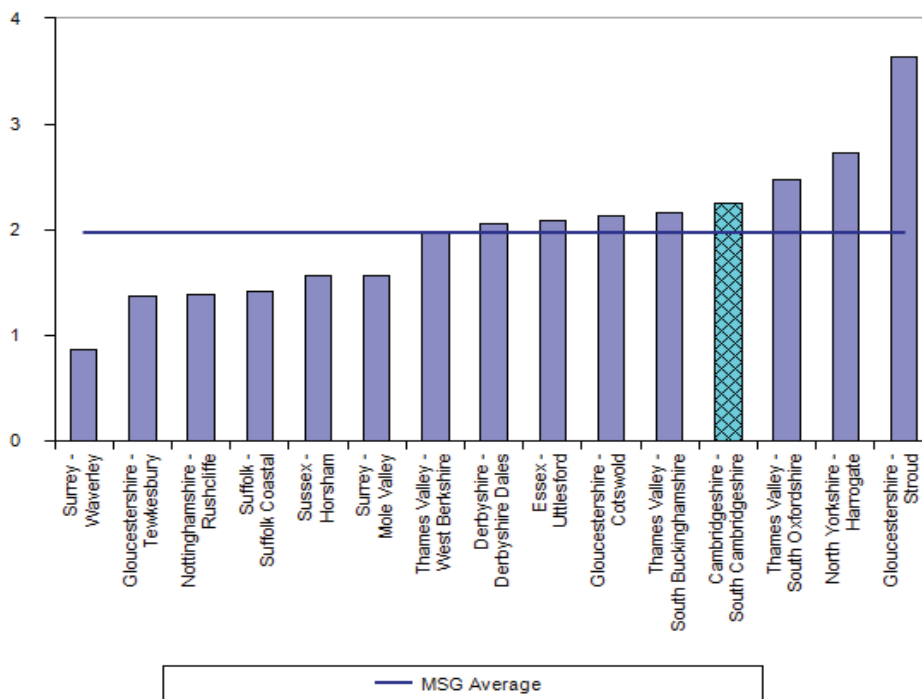
Priorities in the Neighbourhood Policing Areas in South Cambridgeshire						
Priorities	Milton, Histon, Cottenham	Cambourne / Bar Hill - Comberton	Cambourne / Bar Hill - Swavesey	Sawston / Shelfords	Melbourn	Fulbourn / Linton
<i>Anti-Social Behaviour</i>						
General ASB	✓		✓	✓	✓	✓
Alcohol-related ASB	✓	✓	✓	✓		
Graffiti						✓
Vehicle Nuisance	✓			✓	✓	
Speeding	✓	✓	✓	✓	✓	✓
Parking Issues		✓	✓	✓	✓	
Noise Nuisance	✓					
Youth related ASB		✓		✓	✓	
Trespass	✓					
<i>Other Crime</i>						
Burglary Dwelling		✓	✓	✓	✓	✓
Burglary Other					✓	
Criminal damage	✓	✓		✓		✓
Vehicle Crime	✓				✓	✓
Theft Other					✓	

MISUSE OF DRUGS

Recommendations

It is recommended that South Cambridgeshire Partnership does not prioritise substance misuse. However the partnership should maintain substance misuse as a theme to its work in other areas, particularly in relation to reducing re-offending and serious acquisitive crime.

**Drug Offences per 1000 Residents, South Cambridgeshire
Most Similar Group, Sep 08 – Aug 09**



Drug Offences

It should be noted that data on levels and types of drug offences are only identified through police activity. Therefore recorded offences within any twelve-month period do not necessarily provide an accurate picture of the true level of drug misuse.

Within Cambridgeshire overall, 1257 cannabis warnings were issued in 2008/09, a drop of 168 from the previous year.

The current trends in drug related offences in South Cambridgeshire show that the majority of offences were for the possession of drugs; although there has been large decrease in this offence type. Overall there has been a drop in supply offences.

National Picture

General national statistics on the trends in young people's drug misuse (Including the 2007/08 British Crime Survey) show that the level of misuse has gradually fallen from a peak in 2001. Reported drug misuse amongst 16-24s is now at its lowest point since 1995.

(Source: *Drug Scope 2008*). As shown by the graph above, the numbers of drug offence crimes recorded in South Cambridgeshire is just above the MSG average and therefore should be addressed.

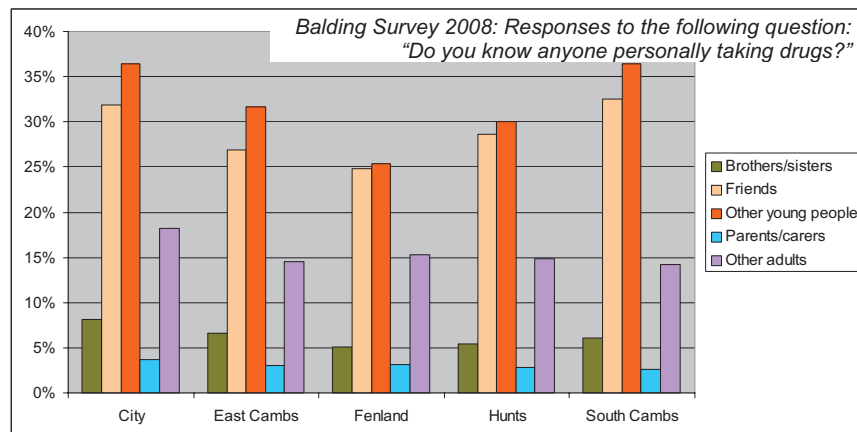
Misuse of Drugs: Population data

The Cambridgeshire Drug and Alcohol Action Team (DAAT) examines various data sources on the population of problematic drug users (PDUs) throughout Cambridgeshire. The following data has been produced with regards to the Cambridge-based localities:

- Cambridge-based treatment services saw 551 people in effective treatment in 2008/09, including 315 new starters. This encompasses services over East Cambridgeshire, Cambridge City, and South Cambridgeshire. It is not possible to separate the data further to examine what proportion of these will be from the South Cambridgeshire partnership area. It should also be noted that these numbers could include the same client twice if they interact with more than one service.
- Heroin appears to be the most prevalent drug for clients in treatment and for those within CDIP.
- The CDIP (Cambridgeshire Drug Intervention Program) works to provide drug treatment and support to individuals who have been identified as committing offences to support their drug addiction. In 2008/09, 216 people across Cambridgeshire were treated or supported by the DIP. The referral routes through to the DIP are varied but the most frequent include through court referrals and from prison drug treatment teams (for offenders returning to the area after completion of sentence).

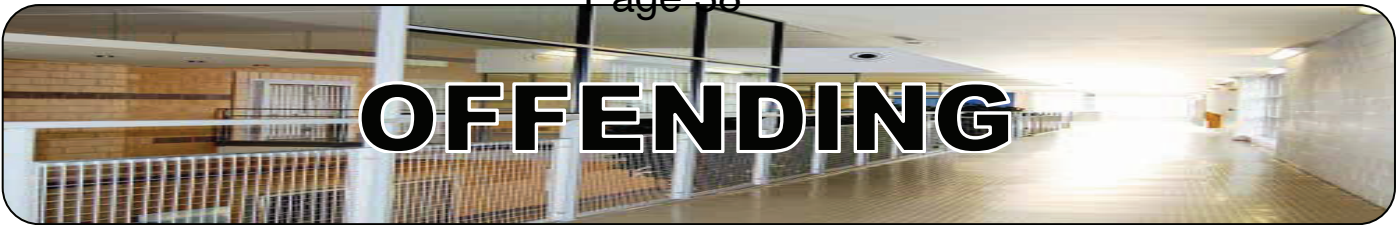
Current Performance

No local "Drug Market Profile" reports have been recently produced; however we do have information from other sources. The Balding Survey 2008 examined drug use amongst children and young people from school years eight and ten. The chart below describes their responses when asked about drug use amongst their friends and families, and demonstrates that there are the same trends in all areas within the county, with the primary sources being through friends and other young people.



The Cambridgeshire "TellUs 3" survey, undertaken by Ofsted, was also recently released. 14% of young people completing the drugs question in the survey stated that they have taken drugs, with cannabis or skunk being the most common drugs reported taken. 74% of young people say that the information and advice they get on drugs is good enough, which is more than the national average of 67%.

Locally, a survey was also carried out during National Drugs Week, asking members of the community how they felt about alcoholism, drug dealing and drug use within their communities. Within South Cambridgeshire, it emerged that primary concerns revolved around young people, underage drinking and anti-social behaviour, with many stating that substance misuse issues had affected either their families or communities as a whole.



Recommendations

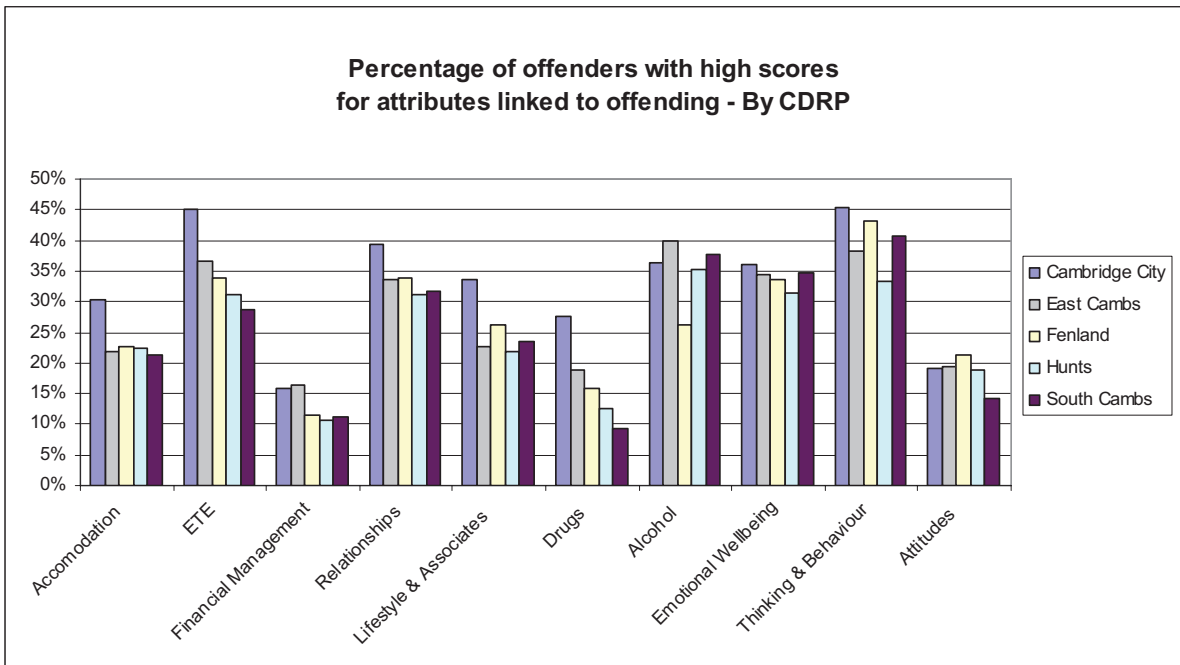
It is recommended that South Cambridgeshire continue to prioritise reducing re-offending.

Adult Offenders – Probation

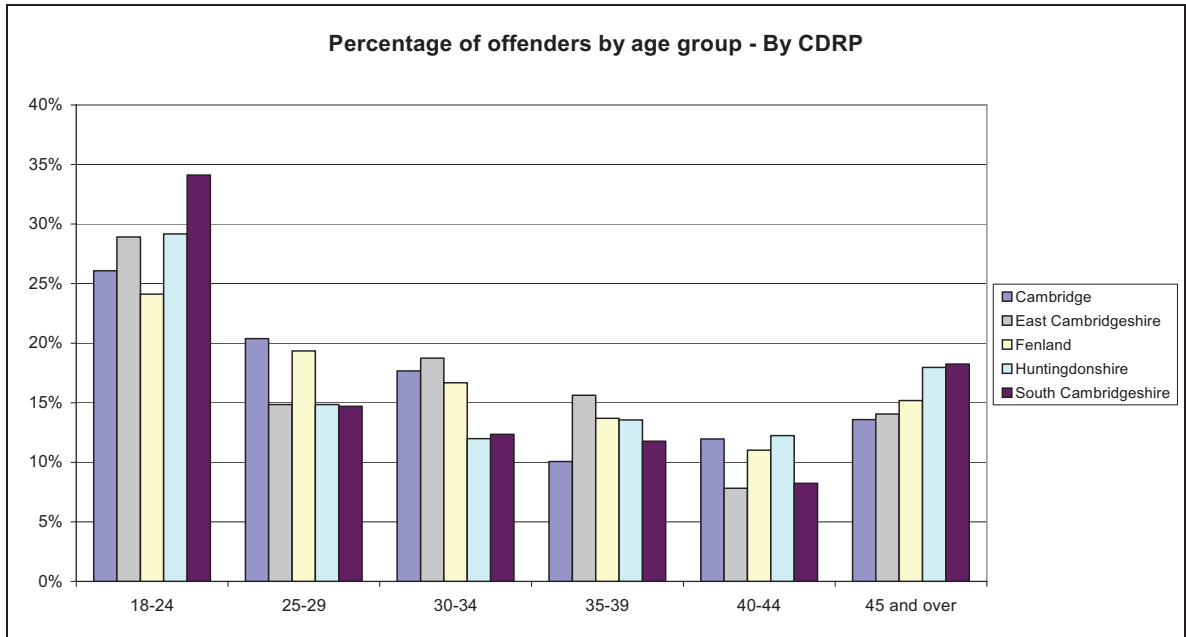
A brief analysis of all offenders under current supervision with Cambridgeshire Probation Service in August 2009 was carried out. The data showed 3,178 cases in total for the county. Of this 31% were located in Peterborough and it was not possible to map a further 25% to districts within the county. This led to the following conclusions:

- Of the total offenders within the dataset 13% were categorised as being at high risk of reconviction.
- 30% of offenders were aged between 18 and 24.
- 90% of offenders were male. This is a slight increase on the proportion of male offenders compared to the previous dataset.

Probation uses the OASys assessment process for identifying an individual’s needs. The graph below shows the proportion of clients with these attributes linked to offending by CDRP area.

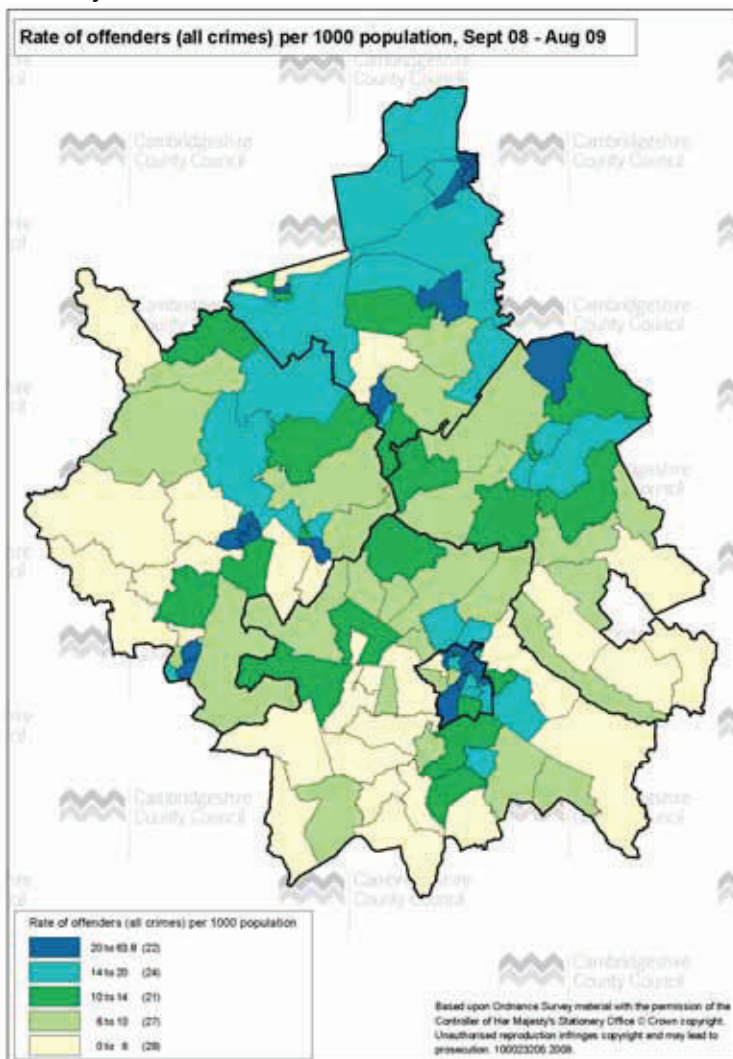


South Cambridgeshire had a higher proportion of offenders aged 18-24 than the other districts and the dataset as a whole. The district recorded a lower percentage of offenders with a high score for drugs.



Police recorded offenders

Analysis of police recorded data on known offenders shows their distribution across the county.



Repeat Offending

Analysis carried out by Cambridgeshire Constabulary on 2nd September 2009 showed that of the 64569 crimes reported between 01/09/08 and 31/08/09 in Cambridgeshire & Peterborough:-

- 23.3% of crimes were detected.
- There were 10,688 separate offenders (Note, some crimes have more than one offender, while some offenders have committed more than one crime)
- Therefore 24.9% of offenders (2,660) have committed more than one crime from September 08 to August 09
- 79 offenders were listed in 10 or more crimes each, during this period. This is less than 1% of total offenders.

There is no clear definition for a repeat offender in order to give consistency to measures and make reliable local and national comparisons.

Prolific & Priority Offenders (PPOs)

Proven offences for Central & Southern's PPOs for the preceding year of 07-08 were 433. The 12 month period that followed on and ended March 09 showed a reduction to 303. This is a reduction of 30.03% and well exceeds the standard potential improvement target of 17%. The number of offenders on the scheme who had committed offences whilst declared a PPO rose marginally.

At the end of June 2009 the Home Office/Ministry of Justice produced refreshed national guidance to all PPO schemes. This guidance is timely and should enable Cambridgeshire's three BCU based PPO schemes to refocus their attention on SAC offenders (particularly burglary) and assist in standardising the approach across the county.

The two main drivers for future PPO development are the intention to make the schemes more dynamic (i.e. quicker on and off – an historic problem with current arrangements) and to ensure the schemes are targeted to serious acquisitive crime.⁶ There has been turnover of offenders in these systems in the last 12 months, however Southern have had a total of 29 individuals in their systems for over 3 years. Further, Southern has had 5 PPOs adopted since August 2004. The new guidance and development plan intends to increase the level of turnover of offenders in a timelier manner.

In August 2009 there were around 112 persistent offenders ranging from 58 in Northern to just 20 in Central, with 46 of these shown to be in custody. The profile of Cambridgeshire's PPOs follows national trends, in that they are overwhelmingly white males, aged between 20 to 26 years.

Substance Misuse

The link between Class A drug abuse (Heroin, Cocaine, Crack Cocaine) continues to be well evidenced with 83% of PPOs in Northern Division linked to class A drugs; However engagement with DIP in Southern & Central divisions does not appear to be as high. A review of DIP in these areas hopes to address this imbalance.

Integrated Offender Management (IOM)

Integrated offender management is a system that provides all agencies engaged in local criminal justice partnerships with a single coherent structure for the management of repeat offenders.

⁶ Source:- Ch Insp Gary Goose – Email to Div Commander Aug 09

Young offenders (those under 18 years) are already managed using an integrated approach through Youth Offending Teams and Deter Young Offender (DYO) management. Integrated offender management builds on this by incorporating a wider range of partners. This joined-up approach helps to deliver clear operational benefits for both adult and youth systems. Integrated offender management builds on the success of other work by enhancing efforts to rehabilitate and resettle them.

Integrated offender management aims to help local partners jointly reduce crime and re-offending. It builds on such schemes as the Prolific and other Priority Offender (PPO) programme, which the partners will be familiar with.

Young Offenders

	Number of Offences	% of all offences
Theft and Handling	319	38%
Violence Against the Person	188	22%
Criminal Damage	103	12%
Motoring	56	7%
Drugs	53	6%
Public Order	49	6%
Other	26	3%
Non Domestic Burglary	19	2%
Vehicle Theft	15	2%
Racially Aggravated	7	1%
Domestic Burglary	5	1%
Fraud and Forgery	2	0%
Total	842	

The following analysis is of data made available from Youth Offending Service on those under 18s commencing orders in during 2008/09 (receiving final warnings or above) and information about first-time entrants into the criminal justice system during the same period.

During 2008/09 there were 753 recorded first time entrants to the criminal justice system.

It was possible to code the data by ward. However, given the issue with the process of geo-coding it is not possible to publish this information. Broadly speaking the rate of first time entry was similar in wards with large towns/urban areas or those with lower median income.

As with previous year's data, the vast majority of offences committed by first time entrants were relatively minor. The proportion of theft and handling offences has increased and criminal damage has decreased compared to last year.

CRIME AND THE ECONOMIC DOWNTURN

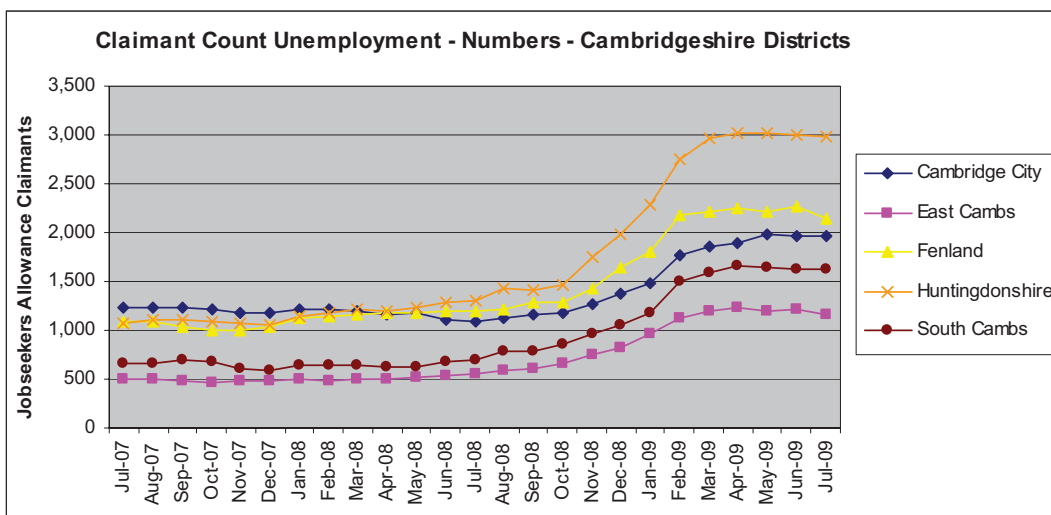
Introduction

There is no doubt that an economic downturn has occurred. The UK economy has shrunk by 5.5% since the first quarter of 2008⁷ and is in recession. The rate at which the economy is shrinking has already decreased, and many commentators expect the economy to begin to grow during 2010. Although "Journalists are falling over themselves to find signs of ... the credit crunch crime wave"⁸, the availability of evidence is limited. This section summarises economic trends and identifies narratives linking crime and the economy, testing those of relevance to Cambridgeshire Community Safety Partnerships.

Impact of the Economic Downturn in Cambridgeshire

Locally, the clearest sign of the recession has been an increase in unemployment. In July 2009⁹ the claimant count unemployment rate for Cambridgeshire was 2.6%, up from 1.3% one year previously.

Within the county the unemployment rate has risen most in Fenland, which is the only district with an unemployment rate similar to England (4% and 4.1% respectively). As the graph below¹⁰ shows, the greatest numerical increase in claimants has been in Huntingdonshire. Unemployment locally has risen less than across England overall; Cambridge City has fared particularly well, with a rise in unemployment from just 1.2% to 2.2%. The number of claimants has stabilized in recent months, potentially due to a combination of seasonal trends, claimants reaching the end of their six-month benefit period and slight economic improvements. In terms of business activity, the Greater Cambridge Partnership reports mixed signs, consistent with suggestions that some industry sectors have been affected more than others. Commentators¹¹ suggest that Cambridgeshire has been less affected than other areas and is well placed for an early recovery.



⁷ East of England Recession Impact, Insight East, September 2009

⁸ Andy Tighe, BBC Home Affairs Correspondent, BBC News, 16th July 2009, Report on release of British Crime Survey 2008/09

<http://news.bbc.co.uk/1/hi/uk/8153392.stm>

⁹ County Council, Research Group, Unemployment Briefing, July 2009

¹⁰ As ref 3

¹¹ Glenn Athey, Insight East / Commentary with GCP regular monitoring reports

There is concern that young people may be particularly affected by the downturn. The number of young people 'not in education, employment or training' (NEET) in England increased from 9.7% at the end of 2007 to 10.3% at the end of 2008¹², with the increase attributed to a reduction in the employment of young people. Data for Cambridgeshire indicated a small increase in young people NEET, from 5.0% in 2007 to 5.2% in 2008 (60 more young people)¹³. Given the numbers involved it is doubtful that this would have any significant impact on crime and disorder locally, despite literature¹⁴ noting a relationship between increases in juvenile unemployment and juvenile crime.

A review of the longer-term impact of the recession on disadvantaged groups was conducted by Stafford & Duffy¹⁵. The study concluded that some disadvantaged groups (such as disabled people, ethnic minorities and people with low skills) experience an increase in, and longer duration of, unemployment during a recession. As these groups are more likely to live in deprived areas, such areas may suffer disproportionately. Prospects for ex-offenders are less clear; although they have difficulties obtaining and maintaining employment, no robust studies show this to be worse during a recession.

Looking for narratives

Following a literature review, including a media scan, we have identified the following narratives linking crime trends with the economic downturn:

Narratives suggesting increases in crime:

- Increased demand for second hand goods will lead to an increase in acquisitive crime such

as dwelling burglary¹⁶, shop theft^{17&18} and other thefts.

- A small proportion of laid-off IT experts will turn to hi-tech crime and fraud¹⁹.
- The global downturn will create opportunities for serious organized crime, particularly in the areas of immigration crime, fraud and computer crime²⁰.
- Competition for work may lead to heightened hostility towards economic migrants and an increase in the appeal of far right groups²¹.

Narratives suggesting decreases in crime:

- The global fall in metal prices has led to a decrease in metal and vehicle theft.
- The reduction in activities such as house building will lead to a reduction in theft from building sites and other centres of economic activity.

Of these narratives, an increase in acquisitive crime has the greatest potential to damage the performance outlook for the Partnerships therefore we will focus on this. Potential hostility towards economic migrants will be considered in the diversity section.

The link between economic conditions and acquisitive crime

Home Office Research Paper 195²² reappraised studies on the link between the economy and crime. Field proposes that, in the *long-term*, there is an 'equilibrium' level of burglary and theft that can be modeled based on the number of young men and levels of consumer spending. In general, a long-term rise in consumer spending is associated with a long-term rise in property crimes, as a result of increased opportunities to commit these crimes. In the *short-term*, however,

¹² Department for Children, Schools & Families, Statistical First Release, Participation in Education, Training and Employment by 16-18 year olds in England, June 2009

¹³ Connexions Service data: CCIS (Client Caseload Information System) Estimates, DSCF, 2009. Note these data are not comparable to DCSF data in footnote 6.

¹⁴ As footnote 10

¹⁵ Review of the Evidence on the Impact of Economic Downturn on Disadvantaged Groups, Prof Bruce Stafford and Dierdre Duffy, Department of Work & Pensions Working Paper 68, 2009

¹⁶ Politics.co.uk – 2008, commentary of the contents of leaked Home Office memo September 2008

¹⁷ News Article, Retail Week, 10th November 2008

¹⁸ Centre for Retail Research, Nottingham University, Shop Lifting for Christmas 2008

¹⁹ BBC News Website, 9th December 2008 and December 30th 2008

²⁰ As footnote 2

²¹ As footnote 2

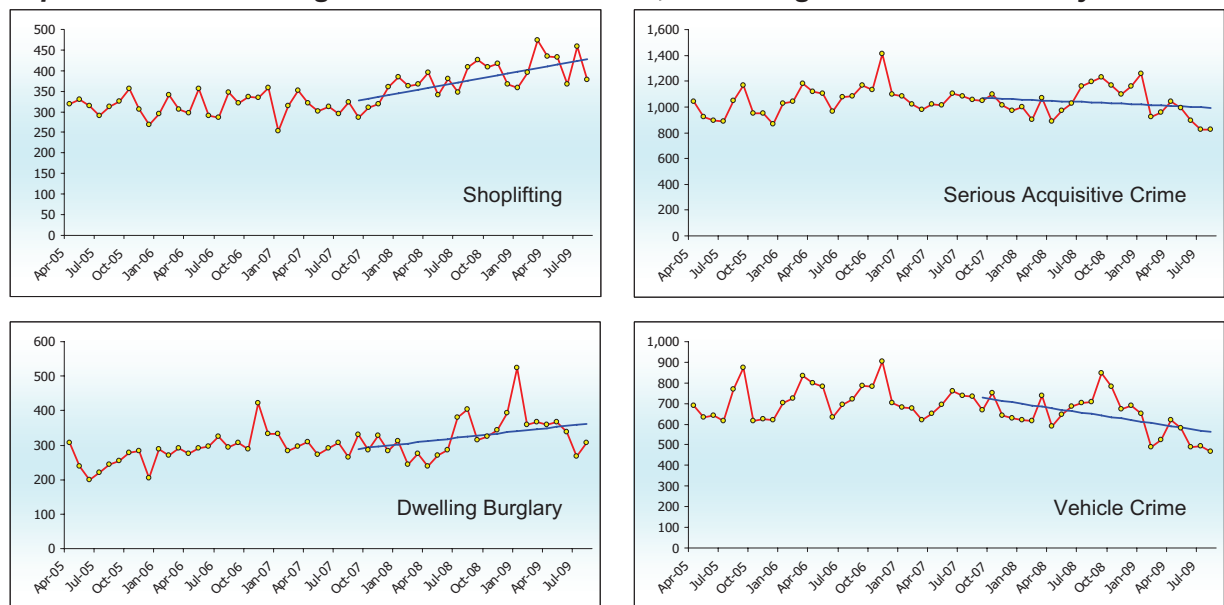
²² Home Office Research Study 195, Trends in Crime Revisited, Simon Field, 1999.

a rapid fall in consumer spending may be associated with a rise in burglary and theft, which Field links to a short-term change in motivation (e.g. when people feel poorer they are more likely to be attracted to criminal means of obtaining goods). When entering a recession, therefore, recent motivation associated with feeling well off may be removed while opportunities to commit theft remain. According to Field's model, over subsequent years these short-term variations tend to 'correct' themselves, returning to the 'equilibrium'.

Current Trends in Cambridgeshire

The chart series below shows long-term trends in selected acquisitive crimes for Cambridgeshire and Peterborough. Trends show an increase in shoplifting and dwelling burglary and a fall in vehicle crime over the last two years. The composite measure of serious acquisitive crime shows little change. Individual trends will be considered in more detail in the relevant sections of the strategic assessment.

Long term trends in selected Acquisitive Crime to August 2009, Cambridgeshire Constabulary Area. Trend lines show the two year trend from September 2007 to August 2009. Source CORA, Cambridgeshire Constabulary.



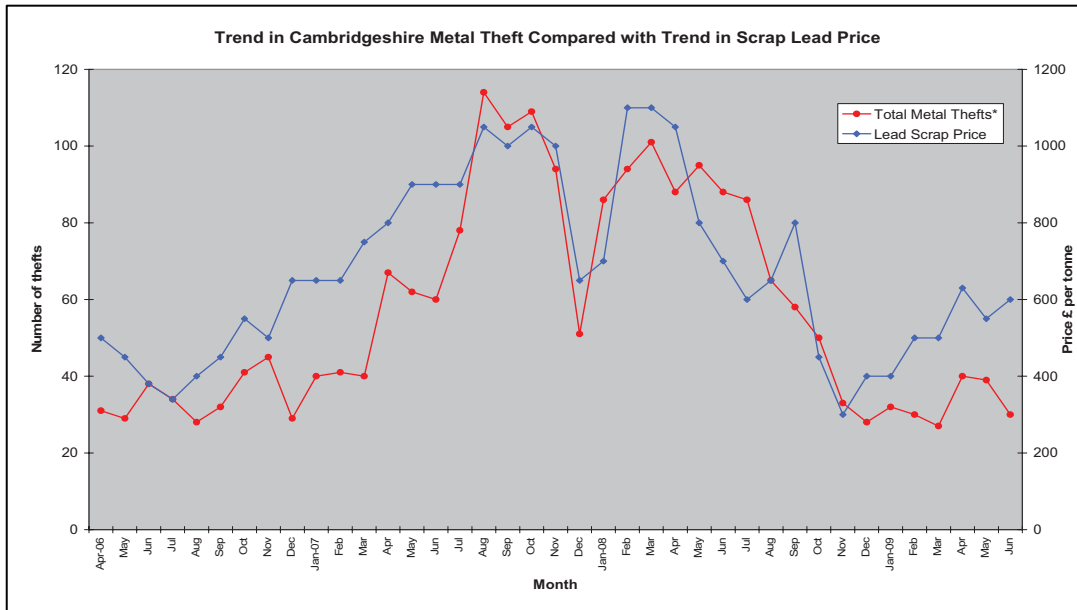
The most striking trend in acquisitive crime has been the 18% increase in shoplifting across Cambridgeshire. Bamfield²³ reports that, after a five-year decline, 40% of European retailers are now reporting an increase in shoplifting. Possible explanations focus on factors that motivate offenders, such as unemployment and lower incomes. Bamfield also reports a change in shopping habits, with consumers switching to cheaper stores that may be more vulnerable to shoplifting.

Burglary is subject to peaks of offences by one or two prolific offenders. Intelligence suggests that the two recent local peaks may relate to a small number of individuals. If these peaks were removed,

there would be no more than a weak upward trend.

One explanation for the decline in vehicle crime is the fall in scrap metal values following the recession. Examination of the relationship in Cambridgeshire suggests a possible relationship between the two, but many other factors influence vehicle theft. A clearer relationship can be shown when metal thefts are compared to the price of scrap metal (the price of lead is used as a proxy for all metals as they have followed a similar trend in recent months). The relationship between the two is remarkable and suggests that the route from point of theft to the price-sensitive scrap-metal markets is relatively short.

²³ Is Higher Shrink Inevitable In a Global Recession, Professor J Bamfield, 2009



Conclusions

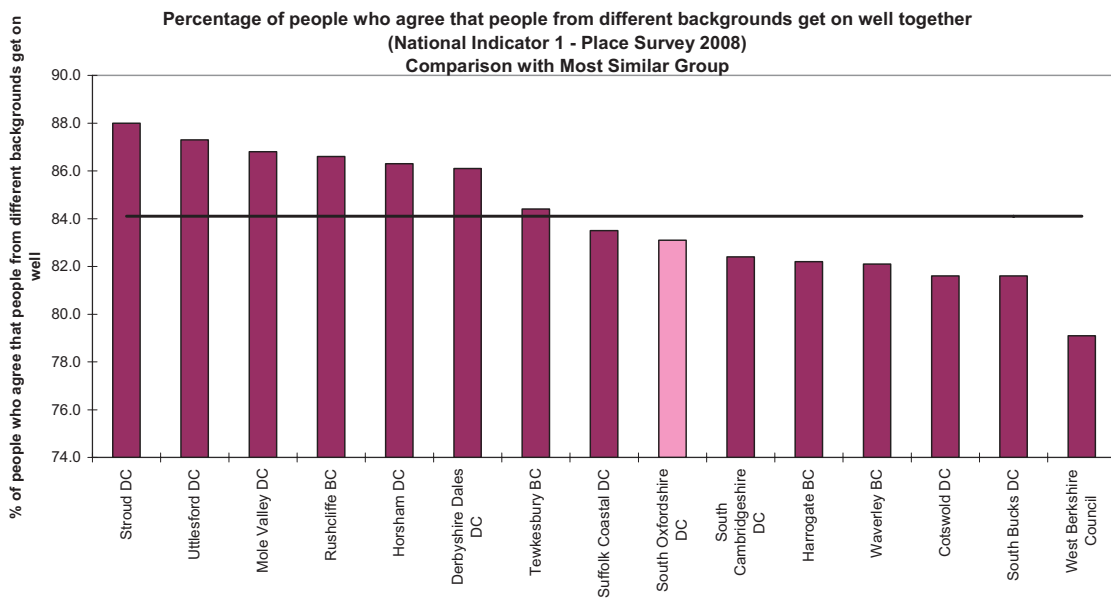
- Cambridgeshire has been less affected by the recession than other parts of England.
- Young people and disadvantaged groups are likely to be more vulnerable.
- While a number of narratives link the recession to increased crime, many of these are of little relevance to Cambridgeshire.
- Home Office research shows that a rapid decrease in economic prosperity may lead to a short-term increase in acquisitive crime.
- The clearest example of a possible recession related crime increase in Cambridgeshire is the 18% increase in shoplifting over the last twelve months.
- Other trends such as the increase in dwelling burglary will be influenced by the activity of a small number of offenders, so it is difficult to link these to the recession.
- The fall in scrap-metal prices since the recession began has meant a decrease in metal theft and possibly a decrease in vehicle theft.



Recommendations

It is recommended that South Cambridgeshire prioritise diverse communities.

Current Performance



Public Perception

Adults

South Cambridgeshire is below the most similar average for NI 1, but was the second highest in the county. The chart above does show there is room for improvement in this indicator. The 2008 Place Survey asked 2 further questions relating to public perception of cohesion.

- Only 22% of residents of South Cambridgeshire that responded thought there was a problem with people not treating each other with respect & consideration. This is in line than both the CSPs most similar group average (24%) and the county average (23%).
- The district performed in line (60%) with both the most similar group average (62%) with the county average of 59%, for people feeling they belong to their immediate neighbourhood.

Young People

As part of the Big Plan, a series of countywide consultations were held with young people over the last couple of years. The following issues were identified:

- Tackling racial discrimination was a priority identified by young people from South Cambridgeshire. Over half the young people attending the session were from the Gypsy and Travellers community.
- Prejudice was also raised during consultation with young people in Huntingdonshire, particularly towards Eastern Europeans living in Oxmoor and reference made to them as 'illegal immigrants'.

- Young people also felt they were discriminated against because of where they live, for instance they felt the poor reputation of Oxmoor labelled them as 'troublemakers or chavs'.
- Young people with disabilities felt excluded by able-bodied young people.

National Picture

The key findings of the national 2007/08 Citizenship Survey²⁴ showed the following:

- Cohesion was highest among those aged 75 or over (91%) and lowest among those aged 16 to 24 years (76%).
- Overall, people from ethnic minority groups (83%) were slightly more likely than white people (81%) to think their local area was cohesive.
- People who perceived a high level of ASB in their area were less likely to think the area was cohesive (64%) than those perceived a low level of ASB (86%).

Studies²⁵ that have looked at the relationship between cohesion and crime have suggested that more cohesive areas have lower crime levels. The theory behind this is that higher levels of social integration can lead to the community sharing the same values and goals, and these include keeping the neighbourhood safe and free from crime. Crime is also lower in areas that are disadvantaged but have high levels of cohesion.

South Cambridgeshire's Demography

South Cambridgeshire's population was 140,500 in mid-2007, 9,900 (7.6%) higher than in 2001. This is the highest actual population increase in the County. The population is forecast to increase by 29,300 by 2021, representing growth of 20.9%. Only Cambridge City is forecast to show greater population change in the coming years. The district has an ageing population. The proportion of the population aged over 65 has increased slightly since 2001, to 16% in 2007, and is forecast to reach 24% by 2021. The proportion aged 0-19 is forecast to fall from 25% in 2001 to 22% in 2021.

Population growth in South Cambridgeshire, Cambridgeshire, the East of England and England (2001-2021)

Area	2001	Change 2001-2007	% Change	2007	Change 2007-2021	% Change	2021
Cambridge City	109,900	5,300	4.8	115,200	36,000	31.3	151,200
East Cambridgeshire	70,900	7,000	9.9	77,900	2,000	2.6	79,900
Fenland	83,700	7,600	9.1	91,300	8,100	8.9	99,400
Huntingdonshire	157,200	4,800	3.1	162,000	2,500	1.5	164,500
South Cambridgeshire	130,600	9,900	7.6	140,500	29,300	20.9	169,800
Cambridgeshire	552,100	34,700	6.3	586,800	78,100	13.3	664,900
Cambridgeshire and Peterborough	709,400	46,200	6.5	755,600	113,300	15.0	868,900
East of England*	5,400,000	261,000	4.8	5,661,000	810,000	14.3	6,471,000
England*	49,450,000	1,642,000	3.3	51,092,000	5,665,000	11.1	56,757,000

Source: CCCRG Mid-2007 district level population forecasts; **ONS Sub-national population estimates and projections

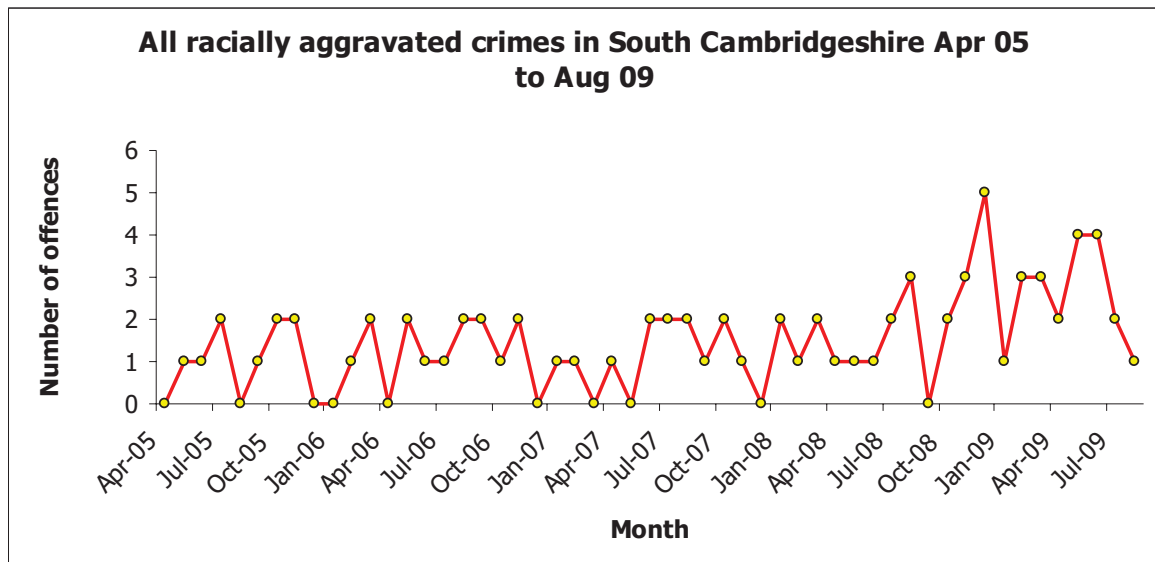
²⁴ 007-08 Citizenship Survey Community Cohesion Topic Report, Department for Communities & Local Government - Aug 09

²⁵ The Economic Case for Cohesion, Department for Communities & Local Government – Aug 09

Between 2001 and 2007, net migration made up 69% of population change in South Cambridgeshire, with the remainder the result of 'natural change' (the balance of births and deaths). The majority of the change due to migration relates to movements from within the rest of the UK. Although there are sizeable flows of international migrants into and out of the district each year, net international migration accounts for only a small proportion of overall change.

The 2001 Census data showed that 3.8% of South Cambridgeshire's population identified as White Irish/White Other, with 3,800 people (2.9%) identifying as from ethnic groups other than White. The largest identified minority ethnic groups were Indian and Chinese, together representing 0.9% of the population. It is likely that the population from ethnic minority groups has increased slightly since 2001. The Cambridge Area Travellers Needs Assessment 2005 estimated there were 6,080 Gypsies/Travellers in Cambridgeshire and Peterborough in 2005, of whom 1,330 lived in South Cambridgeshire. This is the second highest figure in Cambridgeshire, after Fenland.

Hate Crimes



The level of racially motivated offences remain low in the district and the CDRP is in line with its most similar group.

Preventing Extremism

Prevent remains a key part of the Government's long-term strategy to tackle the threat from international terrorism. Locally it is recognised that it is important to ensure that the approach to the Prevent programme is delivered as effectively as possible, especially in its alignment to the requirements of National Indicator 35 (Building Resilience to Violent Extremism).

In July 2009 the threat level to the UK from international extremism was lowered from Severe (highly likely) to Substantial (strong possibility) but it remains the greatest terrorism-related threat to Cambridgeshire. In addition, Domestic Extremism continues to pose a threat to Cambridgeshire.

As part of the government's Prevent strand, every Local Authority Area is required to have a Counter Terrorism Local Profile (CTLP), which is a mechanism for sharing information between Special Branches, BCU commanders and Partners. The CTLP is a Restricted document which discusses the vulnerability and threat levels to each

Local Authority Area/BCU, identifies intelligence gaps and makes recommendations, which are then used to devise action plans that are reviewed six-monthly.

Local Authority Districts and Statutory Partners are critical to securing local delivery which is both proportionate and relevant. It is important that the partnership recognise the role that they can play in supporting the Prevent agenda and help contribute to the coordinated work that is currently being planned at a county level.

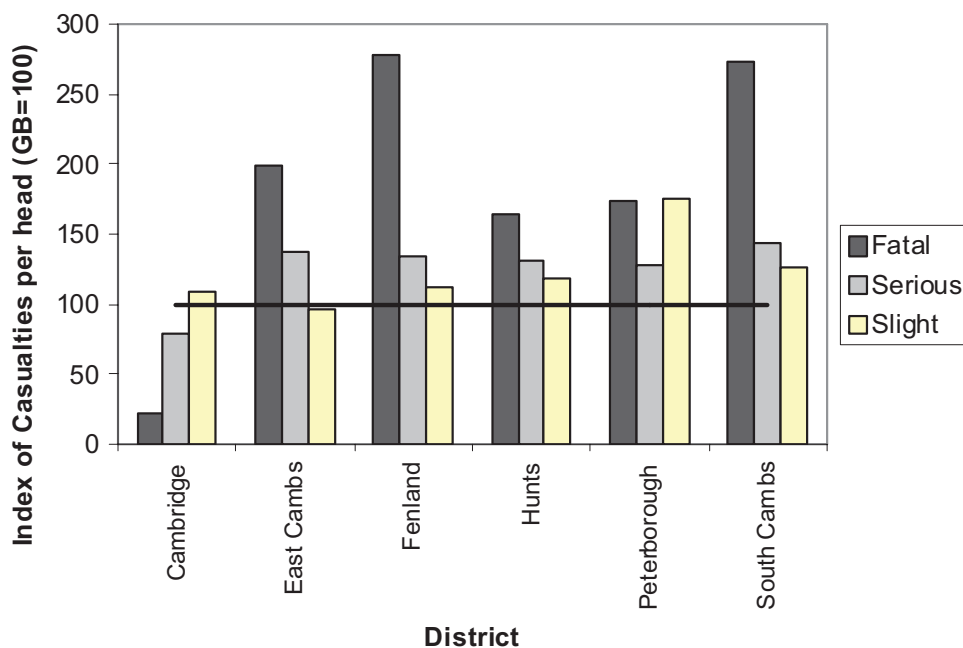


Recommendations

It is recommended that South Cambridgeshire CDRP does not prioritise road safety.

The following information is drawn from the '2008 Joint Road Casualty Data Report'²⁶

Figure 1. Casualty Rate per Head of Population Indices Based on Three Year (2006 to 2008) Averages Compared with Great Britain 2007 Figures (GB=100)



Accidents and casualties in South Cambridgeshire²⁷

Table 1 shows how accidents were distributed throughout Cambridgeshire in 2006-2008 by district (data for Peterborough were excluded). In 2008, 25% of all accidents occurred in South Cambridgeshire. The district was second highest behind Huntingdonshire for accidents in the county.

Table 1. Accidents by Local Authority Area (2006-2008)

Year	Cambridge	East Cambs	Fenland	Hunts	South Cambs	Total
2006	492	271	338	632	555	2,288
2007	420	234	337	612	551	2,154
2008	428	222	288	554	485	1,977
% in 2008	22%	11%	15%	28%	25%	100%

Source: Joint Casualty Data Report 2008

²⁶ Report is available at:

<http://www.cambridgeshire.gov.uk/transport/safety/strategies/joint+road+casualty+report.htm>

²⁷ Figures for casualty rate per head of population do not take into consideration traffic volume, nor the resident status of those involved in accidents.

The average number of casualties in 2006-2008 in Cambridgeshire's districts is shown in Table 2. South Cambridgeshire accounted for 26% of all casualties that occurred in the county. The percentage for serious or fatal casualties in this district was 27%.

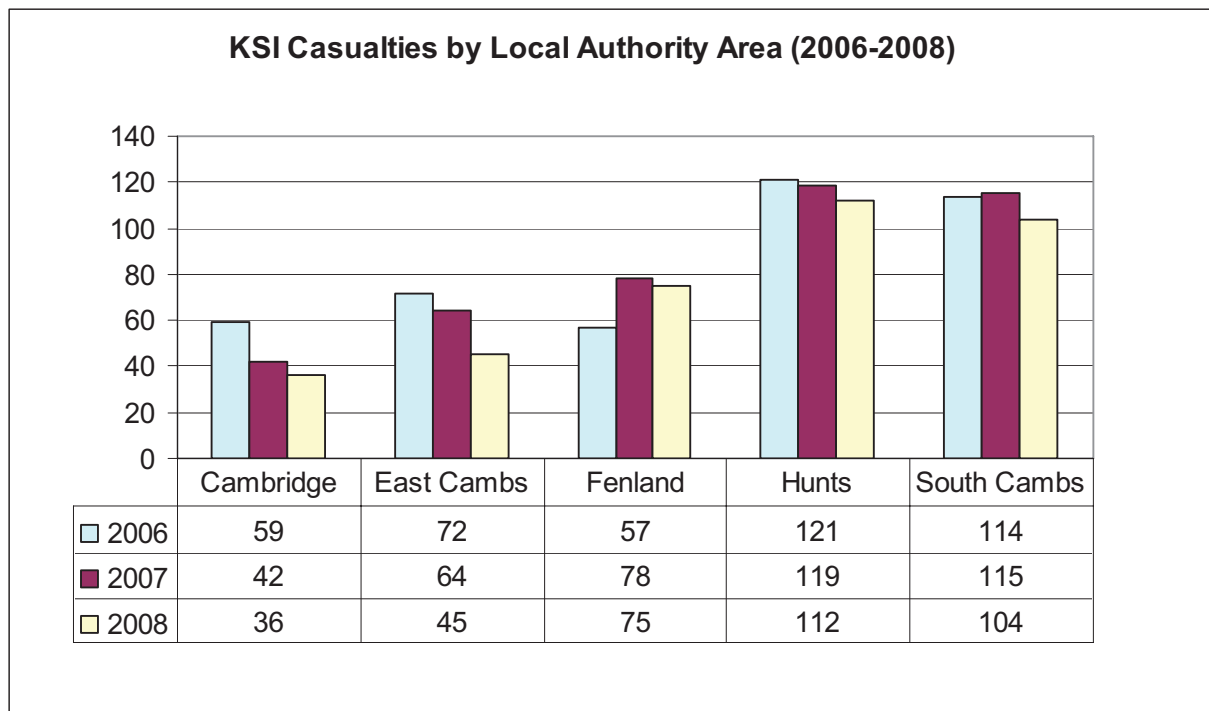
Table 2. Casualties by Local Authority (2006-2008 Average)

Casualties by Local Authority (2006 – 2008 Average)					
Severity	Cambridge	East Cambs	Fenland	Hunts	South Cambs
Fatal	1	8	13	14	19
Serious	44	52	57	104	92
Slight	478	287	375	725	633
Total (% of all county's casualties)	523 (18%)	347 (15%)	445 (12%)	843 (29%)	744 (26%)

Source: Joint Casualty Data Report 2008

Trend in KSI (killed or seriously injured) casualties in 2006-2008 is presented in Figure 2. There was a 9% decrease in KSI casualties in Cambridgeshire from 114 in 2006 to 104 in 2008

Figure 2.



Source: Joint Casualty Data Report 2008

Accidents involving Cars

In 2008, 88% of all accidents that occurred in urban areas outside Cambridge were involving cars. In rural areas of the county where a speed limit is of more than 40 mph, nearly 90% of all accidents were involving cars.

During 2006-08 South Cambridgeshire is second highest for car user casualties after Huntingdonshire. The district is similarly second highest for serious or fatal casualties.

Accidents involving Two-Wheeled Motor Vehicles (TWMV)

In the period 2006-08 South Cambridgeshire recorded the highest average TWMV casualties. There were an average 19 serious and 3 fatal casualties for TWMVs in the district.

Accidents involving Pedal Cycle

In the period 2006-08 South Cambridgeshire experienced an average of 8 serious and 1 fatality in Pedal Cycle casualties.

Accidents involving Pedestrians

In the period 2006-08 South Cambridgeshire experienced an average of 8 serious and 2 fatal Pedestrian casualties.

Current priorities for the Road Safety Partnership:

- *Young Drivers:* Data for Cambridgeshire and Peterborough shows a distinct peak in killed and seriously injured casualty frequency for people aged between 18 and 20.
- *Work-related Road Safety:* Data shows that a high proportion of drivers/riders (around 37%) are involved in accidents whilst driving as part of work or commuting to or from work.
- *Motorcycles:* Two-wheeled motor vehicle users (motor cyclists) experience a greater risk of death and serious injury than all other forms of travel.
- *Speed:* National research (ETSC, 2008) has shown that excess speed is a factor in a third of all fatal accidents, with evidence showing that the faster people drive the greater their chance of being involved in a crash.
- *Migrant Road Users:* Due to the differences between UK legislation and the laws in other countries and changing demographics in the county, there could be an impact on road safety.

Project	SSCF Revenue - Allocated	SSCF Capital - Allocated	Pooled fund - Allocated	Amount Spent	Balance
1. CDRP Partnership Support Officer PART TIME MATERNITY COVER	21,000.00			6,185.85	14,814.15
2. CDRP Partnership Support Officer MATERNITY PAY	6,000.00			4,128.42	1,871.58
3. CDRP Partnership support officer EXISTING POST HOLDER	9,000.00			0.00	9,000.00
4. CDRP ASB Case Officer (part-time from 1 June 2009)	23,607.66			9,465.25	14,142.41
5. Community Cohesion Officer - see Appendix B	6,500.00			6,500.00	0.00
6. Strategic Assessment & Consultation	1,165.57		834.43	0.00	2,000.00
7. PPO interventions fund			500.00	0.00	500.00
8. Alcohol Treatment Requirements - see Appendix C			0.00		0.00
9. Young Females Alcohol Project		8,000.00	7,000.00	7,500.00	7,500.00
10 Smart Water - Domestic Burglary		3,500.00		3,500.00	0.00
11 Smart Water - Village Colleges		2,347.00		0.00	2,347.00
12 Burglary message			3,175.81	3,175.81	0.00
13 Fire & Rescue Service laptops + ASB		3,000.00		0.00	3,000.00
14. Domestic Violence Training and Awareness			1,500.00	0.00	1,500.00
15. Youth Work in Fen Drayton			3,000.00	3,000.00	0.00
16. Security improvements to housing		6,000.00		0.00	6,000.00
17. Street Football			4,400.00	0.00	4,400.00
18. Youth project: Shepreth young people in Shepreth looking to fence in and help put a bin and set up a BMX track on ground that Cambs County Council have let them use			3,000.00	0.00	3,000.00
19. Youth project: Gamlingay the young people are looking for capital funding to put towards the new youth building			4,000.00	3,978.00	22.00
20. ASB Task Group initiatives			0.00		0.00
21 Targetted Policing			5,000.00	0.00	5,000.00
Totals	67,273.23	22,847.00	32,410.24		
Funds remaining	0.00	0.00	3,069.76		

Updates on Projects Funded by the CDRP

Community Cohesion Officer Post (Project 5)

The recruitment process for this post is nearing completion. Interviews have been conducted and an individual selected for appointment to the post. The necessary records checks are currently in progress prior to the appointment being confirmed. A PCSO is covering the duties relating to this post in the interim. A Community Cohesion Officer Steering Group has been formed, with representatives from the Police plus Cambridge City, East Cambridgeshire and South Cambridgeshire CDRPs/CSPs. The first meeting of this group takes place on 23rd October. Neil Weston will attend on behalf of South Cambridgeshire CDRP and will be able to bring an update to the CDRP Board on the 26th.

Strategic Assessment (Project 6)

The results of the Strategic Assessment will be presented at the start of the meeting

PPO Interventions (Project 7)

Update to follow

Young Females Alcohol Project (Project 9)

WASTED update October 2a009

Working with a group of year 10 pupils in the district, as part of their PSHE education programme, this project is to create a film production looking at the relationship with young people and alcohol, leading to choices and consequences. The

The film follows the experience of one young girl and her journey with alcohol, relationships, sexual health and the consequences of the choices she makes. The key areas highlighted in the film are Alcohol and social drinking in young peoples homes, Sexual health and Safe relationships and Car safety.

Preparation for the film and the filming

6 young people for the JUNK group were involved in the devising and making of the film, 4 male and 2 female. The group needed to undergo some training sessions in preparation for the film with specific agencies.

At the end of the summer term the JUNK group had sessions with Meg Battersby (Teenage Pregnancy Team) Corrine Hammond (looking at Safe Relationships) Suzanne Hare (Drug and Alcohol Team). Mark Taylor from the Fire and Rescue Service was also on board to help and support through the filming.

During the summer break the group worked on the film with Peter Harmer, Tom Marty and Lisa McManus. We had a very successful day on 29th August with the filming of the car crash, assisting on the day were Fire and Rescue, Ambulance service, Magpas First Response, road traffic police and a make up artist. The last day of filming was on Saturday 10th October.

Project Milestones

22nd October 11 till 3pm representatives from the key agencies will come together to look at the information and structure of the workshops. Additional dates and times have been made for those who cannot make this date.

11th November – training day 9.30 till 4.00 - Training for all key facilitators on the workshop programme.

11th November 5.30 till 6.30 - Film preview at the Arts Picture House

Date to be set for a presentation of the programme to all PSHe coordinators in South Cambridgeshire schools. To take place at the Sawston Cinema in November 09.

Dates to be set for delivery in schools in the spring and summer term 2010

Partners working on this programme Fire and Rescue, Road Traffic police, Ambulance service, Junction, Sawston and Linton and Cottenham and Swavesey locality, Comberton and Bassingbourn, DAAT (Drug and Alcohol Team), PSHE Service, Teenage pregnancy team, Domestic Violence team.

SmartWater to Tackle Domestic Burglary (Project 10)

The funding allocated to the Police for the purchase of SmartWater Kits to distribute to tackle domestic burglary has been spent in full. This continues to support the initiative where every victim of burglary is offered a crime prevention pack/security survey plus the purchase of the SmartWater kits themselves.

Smart Water for se in Village Colleges (Project 11)

Update to follow

Home Security Message (Project 12)

These funds were spent on the development of leaflet designed to re-enforce top residents the need to take basic steps to ensure their homes are kept secure. It was a two sided, colour leaflet, distributed to all SCDC residents with the summer edition of the SCDC magazine.

Fire and Rescue Service Home Security Lap-Tops (Project 12)

Update to follow

Domestic Violence Training & Awareness (Project 14)

This funding has not yet been spent, but will contribute towards a joint South Cambs/Cambridge City training event for those who work with victims and perpetrators of Domestic Violence. The exact date of the event is yet to be agreed, but will take place in February or March 2010.

Youth Work in Fen Drayton (Project 15)

Numbers

There have been 5 visits by the bus during the term. Average attendance was 12.

Age	11	12	13	14	15	16	17	18
Number Male		3	4	4	1	1	1	
Number Female		3	2	2	4	2		

Session	1	2	3	4	5
Attendance	21	6	12	11	10

Activities

The young people have particularly enjoyed the games consoles and the computers, and when weather has allowed, Frisbee and football outside.

A variety of craft activities and quizzes have been held, as well as discussions, a recent topic for which has included a discussion on lack of facilities for young people in Fen Drayton

General

The young people were very excited by the arrival of the bus in Fen Drayton. The first few weeks have been spent getting to know the young people and have included visits from the local PCSO and a local councillor who was pleased to see something being provided for the young people.

The project has changed its policy on internet access following a serious incident in another venue. Access to social networking, chat and email sites has been blocked but can be unblocked for legitimate use with a youth worker present (e.g. emailing CV to potential employer).

Security Improvements to Housing (Project 16)

Discussions are in progress between the CDRP and the District Council's Housing Services Manager as to the development of this project to enhance home security measures amongst the council's housing stock.

Street Football (Project 17)

The Street Football project is up and running in several locations in the district. There are strong links with football clubs in the area over the provision of coaches for the courses. Each course involves a tournament, the winners of which will progress to a district-wide tournament. Talks are in progress with other district councils who run similar projects about an inter-district tournament later in the year.

Youth Project (Shepreth) (Project 18)

The CDRP is currently seeking assurances from the County Council, via the Parish Council regarding the length of the lease of the land on which a BMX track is proposed to be built.

Youth Project (Gamlingay) Project 19

This funding has been spent in full and has contributed towards increasing the staffing resource for the Youth Café and Youth Clubs in Gamlingay, in order to better engage with more young people and reduce levels of ASB in the village.

South Cambridgeshire CDRP Quarter 2 Performance Monitoring Report July to September 2009



Priority 1: Reduce anti-social behaviour

1.1 Quarterly progress report

Priority Area: ASB

Lead Officer: Insp Chris Savage

Key Achievements during this Quarter¹

- Dedicated Problem Solving Groups were held to develop solutions to Two specific cases – demonstrating a partnership orientated problem solving approach to ASB case resolution
- CDRP partners worked together to host an ASB Information Event. This was attended by a number of District and County and Parish Councillors and gave an insight into the processes partners follow for dealing with ASB as well as the Tools and Powers that are available to the them. Evaluation of the event is currently in progress and feedback will be available shortly.
- Good levels of attendance at ASB Task Group meetings and partner 'buy in' have been maintained since the last quarter
- Partnership working has led to the resolution of a number of ASB cases during the quarter and positive feedback from residents has been received through Neighborhood Panel meetings.
- The CDRP has agreed to fund the Connexions Bus to extend its visits to Papworth until Christmas
- CDRP have developed information sharing links between the ASB TG and the Distinct Council's Benefits Department
- SCDC has worked with 2 pubs (White Lion in Sawston and the Longbow in Stapleford) to set up Pub 4 Kids scheme, which will give young people from 11+ the use of a dedicated room from 5.30pm to 9pm, where they can order soft drinks and snacks. The regularity of Pub 4 Kids is at the discretion of each landlord and may range from daily to weekly"

Areas of Concern for Partnership to Note²

- Absence of the CDRP ASB caseworker due to sickness continues to impact on performance and co-ordination.

Recommendations to Partnership to Address Concerns³

- CDRP are taking steps to recruit to cover the ASB Caseworker post on a temporary basis
- Pub 4 Kids Schemes in Sawston and Stapleford

Any Items for Publicity⁴

ASB Task Group Stats – Q2	ASB Task Group Stats – Cumulative YTD
11 New Cases referred to group this quarter <ul style="list-style-type: none"> • 3 Individuals • 2 Areas • 6 Families 	28 New Cases referred to group YTD <ul style="list-style-type: none"> • 12 Individuals • 7 Areas • 9 Families

In addition, the Task Group continues to deal with the cases of five individuals at its meetings, whose cases were opened prior to April 2009

¹ Please ensure that you only highlight those notable achievements recorded against your Task Group's Action Plan.

² Please ensure that you only highlight those concerns that your Task Group considers should be drawn to the attention of the Partnership.

³ Please ensure that, in connection with the above Areas of Concern, your Task Group sets out its Recommendations to the Partnership to address these Concerns, so that agreement can be made (where appropriate).

⁴ Please ensure that any items included here for Publicity are not protectively marked.

1.2 Quarterly Performance Update

Priority	Number	Action	Milestones	Q1 Status	Q1 Progress	Q2 Status	Q2 Progress
Reducing Anti-Social Behaviour	1.1	Make use of available powers including warning	1.1a Monthly multi-agency information sharing meeting held	Green	15 new cases referred to task group in Q1	Green	21 agenda items at most recent meeting: 14 individuals, 2 families and 5 areas
Reducing Anti-Social Behaviour			1.1b Apply a problem-solving approach to reports of anti-social behaviour	Green	Three Problem Solving Groups held during Q1	Green	Problem solving approach being used at ASB Task Group and at Melbourn group meeting
Reducing Anti-Social Behaviour			1.1c Revised ASB strategy in place	Red	ASB officer on long term sick leave and ASB strategy needs refreshing	Red	ASB officer on long term sick leave and ASB strategy needs refreshing
Reducing Anti-Social Behaviour			1.1d Investigate setting up an intensive family support program	Red	No progress made to date. This will be discussed at the next DV Task Group, which takes place in August.	Red	Discussion carried over to next DVTG - November
Reducing Anti-Social Behaviour	1.2	Make use of mediation service in neighbour disputes	1.2a Contribute funding to Cambridgeshire Mediation Service	Green	£2,500 funding provided annually to service	Green	£2,500 funding provided to service
Reducing Anti-Social Behaviour			1.2b Make information available to residents and tenants about the service	Green	Information provided to tenants when reporting ASB between neighbours	Green	Information provided to tenants when reporting ASB between neighbours
Reducing Anti-Social Behaviour			1.2c Refer appropriate ASB cases occurring in SCDC Housing Areas to mediation service	Green	One case referred for mediation. In other cases the willingness to participate in mediation was not forthcoming from one or more parties.	Green	Two cases referred for mediation in Q2

South Cambridgeshire CDRP – Q2 Performance Monitoring Report – July - September 2009

Priority	Number	Action	Milestones	Q1 Status	Q1 Progress	Q2 Status	Q2 Progress
Reducing Anti-Social Behaviour	1.3	Improve responsiveness of graffiti removal service	1.3a Work with Probation Service Community Service Team to clean affected areas	Green	List provided to Probation Service team on a weekly basis	Green	List provided to Probation Service team on a weekly basis
Reducing Anti-Social Behaviour			1.3b Improve reporting and management procedures for graffiti service	Green	System now in place; graffiti can be reported to SCDC on 03450 450 500 which is open Monday to Saturday, 8am to 8pm	Green	System now in place; graffiti can be reported to SCDC on 03450 450 500 which is open Monday to Saturday, 8am to 8pm
Reducing Anti-Social Behaviour			1.3c Seek to increase capacity of the service	Red	Stats Awaited	Green	Training given to SCDC staff to provide cover to remove offensive graffiti
Reducing Anti-Social Behaviour			1.3d Make graffiti removal kits available for Parish Councils to use	Red	Stats Awaited	Green	Kits purchased; will be distributed as part of action 1.4a
Reducing Anti-Social Behaviour	1.4	Improve the cleanliness of the District	1.4a Establish a programme of at least 10 Community Clean up events per year throughout the District	Red	Stats Awaited	Red	Stats Awaited
Reducing Anti-Social Behaviour			1.4b Improve the appearance within 10 of the larger villages in the District	Red	Stats Awaited	Red	Stats Awaited
Reducing Anti-Social Behaviour			1.4c Commence investigation of all fly tipping reports within 24 hours	Red	Stats Awaited	Green	Reports investigated

South Cambridgeshire CDRP – Q2 Performance Monitoring Report – July - September 2009

Priority	Number	Action	Milestones	Q1 Status	Q1 Progress	Q2 Status	Q2 Progress
Reducing Anti-Social Behaviour			1.4d Focus enforcement interventions in identified fly tipping hotspots including using covert CCTV	Red	Stats Awaited	Red	Stats Awaited
Reducing Anti-Social Behaviour			1.4e Liaise with the County Council to identify any further support in fly tipping prevention	Red	Stats Awaited	Red	Stats Awaited
Reducing Anti-Social Behaviour		Address nuisance and abandoned vehicles	1.5a Investigate 95% of reports of nuisance or abandoned vehicles within 24 hours of notification	Green	This was achieved in quarter 1 to a minimum of 97%	Green	100% average investigated within 24 hours
Reducing Anti-Social Behaviour			1.5b Remove 94% of abandoned vehicles within 24 hours from the point of which the legally entitles to remove the vehicle	Green	This was 100% achieved in quarter 1	Green	100% average removed within 24 hours
Reducing Anti-Social Behaviour			1.5c Improve liaison and intelligence sharing with the CDRP Vehicle Crime Task Group	Green	Intelligence shared on a number of issues through SACTG	Green	CDRP Worked with Environmental Health Colleagues on one case in Q2
Reducing Anti-Social Behaviour			1.5d Deploy police off-road motorcycles to tackle vehicles being used in an anti-social manner	Red	Stats Awaited	Green	These have been used to deal with ASB issues in Impington & Cottenham
Reducing Anti-Social Behaviour			1.5e Contribute to the development of the countywide Speedwatch initiative	Red	Stats Awaited	Green	There are 21 schemes in the district with 170 volunteers signed up. The scheme is linked to the county scheme
Reducing Anti-Social Behaviour			1.5f Hold a Young Drivers safety event	Red	Stats Awaited	Green	One event held during Q2 - Linton

South Cambridgeshire CDRP – Q2 Performance Monitoring Report – July - September 2009

Priority	Number	Action	Milestones	Q1 Status	Q1 Progress	Q2 Status	Q2 Progress
Reducing Anti-Social Behaviour	1.6	Make use of available licensing powers	1.6a Carry out spot check visits to on and off licensed premises	Green	10-15 cases actioned in Q1	Green	16 Checks carried out during Q2
Reducing Anti-Social Behaviour			1.6b Carry out at least 6 multi-agency inspections to on and off licensed premises	Green	1 Visit carried out in Q1 (Licensing, Fire Service & Environmental Health)	Green	4 Visits carried out during Q2 (with Environmental Health colleagues)
Reducing Anti-Social Behaviour			1.6c Consult CDRP partners on new licence and/or variations to licence applications	Green	4 cases consulted on in Q1 – 26 Licence amendments consulted on and carried out in Q1	Green	3 cases dealt with during Q2
Reducing Anti-Social Behaviour			1.6d Carry out criminal record and safety checks for all taxi license applications	Green	100-110 cases approx actioned in Q1	Green	47 Cases actioned during Q2
Reducing Anti-Social Behaviour			1.6e Participate in county licensing group to ensure consistent approach to licensing across the County	Green	Main area of work during this first 3/6 months is towards getting consistency as to how authorities will approach the introduction of the ISA registration scheme. Other work is ongoing in consistency of wording on application forms, information packs sent to all potential taxi applicants, Licensing Act applicants etc. Recently standardised medical questionnaire for taxi drivers.	Green	1 case actioned during Q2

South Cambridgeshire CDRP – Q2 Performance Monitoring Report – July - September 2009

Priority	Number	Action	Milestones	Q1 Status	Q1 Progress	Q2 Status	Q2 Progress
Reducing Anti-Social Behaviour			1.6f Where appropriate refer controversial and/or major applications to the Council's Licensing Committee	Green	2 cases referred in Q1	Green	1 cases referred in Q2
Reducing Anti-Social Behaviour	1.7	Address anti-social behaviour caused by drugs and alcohol abuse	1.7a CDRP Drugs & Alcohol group to meet quarterly	Green	Progress: DAG met during Q1 and is scheduled to meet again in August (Q2). Q1 Performance report awaited	Amber	DAG Meeting in Aug postponed due to lack of numbers of partners available to attend
Reducing Anti-Social Behaviour			1.7b Improve quality and detail of the data available on alcohol and drug issues in the District	Green	CDRP feeds into DAG meetings and encourages exchange of data between partner agencies. Corvu will also enhance this	Green	CDRP feeds into DAG meetings and encourages exchange of data between partner agencies. Corvu will also enhance this
Reducing Anti-Social Behaviour			1.7c Commission alcohol services for young people	Red	DAAT colleagues have advised that these will be available in August and will send them as soon as available	Red	Stats Awaited
Reducing Anti-Social Behaviour			1.7d Contribute to the work of the Cambridgeshire Alcohol Commissioning Group to deliver the Cambridgeshire Alcohol Strategy	Green	CDRP feeds into DAG meetings and encourages exchange of data between partner agencies. Corvu will also enhance this	Red	Stats Awaited
Reducing Anti-Social Behaviour			1.7e Make wide use of conditional cautions for offenders with drugs and/or alcohol issues	Red	DAAT colleagues have advised that these will be available in August and will send them as soon as available	Red	Stats Awaited

South Cambridgeshire CDRP – Q2 Performance Monitoring Report – July - September 2009

Priority	Number	Action	Milestones	Q1 Status	Q1 Progress	Q2 Status	Q2 Progress
Reducing Anti-Social Behaviour			1.7f Refer offenders with drugs and/or alcohol issues to treatment services	Red	DAAT colleagues have advised that these will be available in August and will send them as soon as available	Red	Stats Awaited
Reducing Anti-Social Behaviour			1.7g Trading Standards to deliver services including Community Alcohol Partnership and Test Purchasing	Green	Trading Standards frequently ask ASB Task Group for input into areas for areas to focus Test Purchasing on. No Test Purchase exercises were carried out in Q1, although there are plans to stage a series of these during the school summer holidays and up to the end of October, in partnership with Police colleagues.	Red	Stats Awaited
Reducing Anti-Social Behaviour	1.8	Work with young people to raise awareness about anti-social behaviour, and their rights and responsibilities	1.8a Deliver The Streets programme to over 1,000 year 9 students in village colleges across the District	Green	Streets programmes delivered to over 700 year 9 students at Linton, Bassingbourn, Comberton and Swavesey Village colleges	Green	No Streets projects delivered this quarter but dates set for next year and also to share good practice with CITY COUNCIL
Reducing Anti-Social Behaviour	1.9	Enable a wide range of opportunities for young people across the District	1.9a 28% of young people aged 13-19 involved in youth clubs, projects, outreach and detached youth work	Red	Stats Awaited	Red	Stats Awaited
Reducing Anti-Social Behaviour			1.9b Targeted use of detached youth workers	Red	Stats Awaited	Red	Stats Awaited
Reducing Anti-Social Behaviour			1.9c Work with partners to provide grants for sports, play and arts projects and initiatives	Green	CDRP has contributed to South Cambs Street Football and County Council 'Wasted' film production	Green	CDRP has contributed to South Cambs Street Football and County Council 'Wasted' film production

South Cambridgeshire CDRP – Q2 Performance Monitoring Report – July - September 2009

Priority		Action	Milestones	Q1 Status	Q1 Progress	Q2 Status	Q2 Progress
Reducing Anti-Social Behaviour			1.9d Plan for a wide range of facilities for children, young people and families in growth areas in the District	Green	76.2% of all young people in the district participated in such activities during 08/09 – annual figure only no Qtrly figures available	Green	76.2% of all young people in the district participated in such activities during 08/09 – annual figure only no Qtrly figures available
Reducing Anti-Social Behaviour			1.9e Work with 10 young people on CF&RS Mentoring Programme	Green	The Fire and Rescue Service has worked on a variety of mentoring projects with school children in the district during Q1	Green	The Fire and Rescue Service has worked on a variety of mentoring projects with school children in the district during Q2
Reducing Anti-Social Behaviour	1.10	Undertake Visual audits to remove opportunities for crime	1.10a Work with Parish Councils to set up a Visual Audits working group	Red	4 PC have expressed interest – 2 in adopt a neighbour and 2 in visual audits – despite numerous attempts to arrange a meeting an impasse has been reached	Red	4 PC have expressed interest – 2 in adopt a neighbour and 2 in visual audits – despite numerous attempts to arrange a meeting an impasse has been reached
Reducing Anti-Social Behaviour			1.10b Carry out a minimum of 3 visual audits	Red	5 PC have expressed interest – 2 in adopt a neighbour and 2 in visual audits – despite numerous attempts to arrange a meeting	Red	4 PC have expressed interest – 2 in adopt a neighbour and 2 in visual audits – despite numerous attempts to arrange a meeting
Reducing Anti-Social Behaviour	1.11	Respond to and investigate complaints of all forms of statutory nuisance	1.11a Respond to complaints within 3 working days	Green	596 cases received – 585 responded to within PI of three working days (41 given priority response) 11 outside the PI of 3 working days	Red	Stats Awaited

South Cambridgeshire CDRP – Q2 Performance Monitoring Report – July - September 2009

			1.11b Provide out of hours service for handling nuisance complaints	Green	Service in place	Green	Service in place
--	--	--	---	-------	------------------	-------	------------------

Priority 2: Reducing Re-Offending

2.1 Quarterly progress report

Priority Area: Catch and Convict PPO Strategy
Lead Officer: Jenny Jolley (PPO Coordinator)

Total number of clients:

Deter = 4

Catch and Convict and Rehabilitate and Resettle = 9

Number of removals due to successful engagement with the scheme = 0

1. **Key Achievements (What has gone well):**

Enforcement: Monitoring and targeting of a PPO, with regard to an ongoing series of burglaries. Checks made to ensure installation/compliance with a SERCO tag

Enforcement: PPO Officers aided in the search of premises, with regard to property stolen in burglaries.

Enforcement: PPO Officers instigated the arrest of a PPO wanted on suspicion of assault.

Partnership Working: Co-location with Probation. Multi-agency desk has been incorporated into PPO Office and IT made available. PPO Probation Offender Manager to begin working within the PPO office, following return from annual leave, at the beginning of October.

Partnership Working: The PPO officer attended a multi-agency meeting in regard to the education and welfare of a PPO.

Partnership Working: The PPO Officer liaised closely with a hostel, upon the provision of accommodation for a PPO

Prevention: The PPO team facilitated a referral to Drinksense, for a PPO who requested interventions to help with their alcohol abuse, this being linked to their offending behaviour.

Prevention: The Home Office and Ministry of Justice issued papers in June 2009, detailing:

Integrated Offender Management (IOM). Setting out the Governments aim of a coordinated approach to all strands of Offender Management, with the aim of delivering a sustainable reduction in offending.

The case for a review of PPO schemes, particularly in light of the IOM arrangements. The recommendations made within the paper, are being considered and implemented in any areas which require updating within the Southern Division scheme.

Prevention: The crime saved estimator shows that 19 crimes were saved to date in FY2009/10 95 (base level), using the F multiplier (a close approximation to BCS)

Rehabilitation & Resettlement: Hostel accommodation sourced for a PPO who was no longer able to live within the family home.

Rehabilitation & Resettlement: Independent accommodation obtained via SCDC for a PPO following a period of homelessness.

Rehabilitation & Resettlement: Following a move from the family home The PPO scheme provided money from the intervention fund and support, in order that items of furniture could be purchased and delivered, for a PPO and his elder brother.

Deter (YOS)

Age - 16years Current Status - received an 18-month supervision order Jan 09 - July 2010 for robbery.

Over the past 3 months has complied very well with the activities offered as extra support through the Deter scheme. Trained weekly for the London to Cambridge bike ride, which he completed in 3.50 hours on July 27th 2009. He remains committed to the cycling to keep fit and regularly turns out on Sunday morning, which he feels, gives him something to look forward to on the weekend. He has also become a Gym member through the YOT Gym scheme and, he first attended every Tuesday and now attends regularly on his own. He has recently completed a gym instructor course at the CRC and has now begun his 2-year course in plumbing. Extra help with his numeracy and literacy is available and a course book was bought for him through the scheme. He has recently applied for a passport to go on holiday with his girlfriend in the near future, assistance in processing this application was given. Intensive work appears to be keeping him focused which I believe helps him to make positive decisions regarding his life chances. As no further offences have been committed during this quarter and his behaviour and lifestyle appear to be stabilising. His very intensive package of support will soon begin to reduce and greater independence encouraged.

2. Areas of Concern (what has not gone well)

None to report

3. Changes to be made to address concerns

Any Items for Publicity⁵

None

⁵ Please ensure that any items included here for Publicity are not protectively marked.

South Cambridgeshire CDRP – Q2 Performance Monitoring Report – July - September 2009

2.2 Quarterly Performance Update

Priority theme	Number	Action	Milestones	Q1 Status	Q1 Progress	Q2 Status	Q2 Progress
Reducing re-offending	2.1	Address prolific offenders through an effective Priority and Prolific Offenders (PPO) scheme	2.1a Run all 3 strands of the PPO scheme	Green	All three strands of the PPO scheme are running in South Cambridgeshire. This is demonstrated in the Q1 Performance Report submitted to CDRP Board July meeting	Green	All three strands run - PPO Scheme Quarterly Report to CDRP Board refers
Reducing re-offending			2.1b Report quarterly to CDRP board and CCSSB	Green	Q1 Performance Report submitted to CDRP Board July meeting	Green	Q2 Performance Report submitted to CDRP Board October meeting
Reducing re-offending			2.1c Contribute to the work all PPO schemes in the county and in neighbouring counties	Green	Contribution is made to other PPO Schemes. This is demonstrated in the Q1 Performance Report submitted to CDRP Board July meeting	Green	Contribution is made to other PPO Schemes. This is demonstrated in the Q2 Performance Report submitted to CDRP Board Oct meeting
Reducing re-offending			2.1d Monthly PPO meetings held to share information and agree co-ordinated action	Green	Monthly PPO meetings were held in April, May and June. This is demonstrated in the Q1 Performance Report submitted to CDRP Board July meeting	Green	Monthly PPO meetings were held in July, Aug and Sept. This is demonstrated in the Q1 Performance Report submitted to CDRP Board Oct meeting
Reducing re-offending			2.1e Seek to secure long-term funding for entire PPO scheme	Red	Stats Awaited	Red	Stats Awaited

South Cambridgeshire CDRP – Q2 Performance Monitoring Report – July - September 2009

Priority theme	Number	Action	Milestones	Q1 Status	Q1 Progress	Q2 Status	Q2 Progress
Reducing re-offending			2.1f Investigate the impact of adopting "Integrated Offender Management" principles to reduce re-offending	Amber	This work now sits within a small working group in CCJB. DCI Goose has written a paper to Cambs Police Force Exec. Board introducing the IOM model. A response to this is awaited.	Amber	This work now sits within a small working group in CCJB. DCI Goose has written a paper to Cambs Police Force Exec. Board introducing the IOM model. A response to this is awaited.
Reducing re-offending	2.2	Improve housing provision for ex-offenders	2.2a Investigate the feasibility of setting up a Rent Deposit Scheme for PPOs	Amber	Anita Goddard has asked SCDCs Housing Needs & Options Manager to investigate possible funding pots to source this from. Response Awaited.	Amber	Anita Goddard has asked SCDCs Housing Needs & Options Manager to investigate possible funding pots to source this from. Response Awaited.
Reducing re-offending			2.2b Establish a dialogue between partners to set up a Cambridgeshire Offender Accommodation Forum	Amber	Anita Goddard is involved in on-going discussions through Regional Housing Forums. Discussions also taking place by Police. Response Awaited	Amber	Anita Goddard is involved in on-going discussions through Regional Housing Forums. Discussions also taking place by Police. Response Awaited
Reducing re-offending	2.3	Ensure links between ASB Task Group and the PPO scheme	2.3a Ensure appropriate Information Sharing Agreements are in place	Green	Jenny Jolley (Cambs Police PPO Co-ordinator) sits on ASB Task Group and takes on appropriate actions from group meetings.	Green	Jenny Jolley (Cambs Police PPO Co-ordinator) sits on ASB Task Group and takes on appropriate actions from group meetings.

South Cambridgeshire CDRP – Q2 Performance Monitoring Report – July -
September 2009

Priority theme	Number	Action	Milestones	Q1 Status	Q1 Progress	Q2 Status	Q2 Progress
Reducing re-offending	2.4	Work with offenders with substance misuse needs	2.4a Use community orders to refer appropriate offenders to Drug Intervention Programme	Green	There were no Drug Intervention Programme referrals in South Cambs in Q1	Green	There were no Drug Intervention Programme referrals in South Cambs in Q2
Reducing re-offending			2.4b Make use of community orders to refer appropriate offenders to Alcohol Treatment Requirement programme	Green	There were 4 such referrals issued in South Cambs in Q1	Green	There were 4 such referrals issued in South Cambs in Q1
Reducing re-offending	2.5	Improve employment opportunities for ex-offenders	2.5a Develop "Pathway to Work" scheme to support offenders in finding employment through liaison with Job Centre Plus	Amber	Probation are clarifying numbers with Job Centre Plus colleagues	Amber	Probation are clarifying numbers with Job Centre Plus colleagues

Priority 3: Reduce Domestic Violence

3.1 Quarterly Progress Report

Priority Area: Cambridge City and South Cambs

Lead Officer: Simon Kerss

Key Achievements during this Quarter⁶

- South Cambs CDRP has granted £1,500 funding (matched by Cambridge City CSP) towards the development of a DV Awareness Day. This is likely to take place in February or March 2010.
- The partnership has agreed to fund the printing of 10,000 extra DV Services Contact Cards for distribution
- The partnership is going to look at aligning its on-line DV Service Directories to the newly developed County Council on-line directory
- The NI32 repeat rate for Cambridgeshire is currently 25.5% (Central 27% / Southern 24%). Numbers of cases referred to the MARACs this quarter is 88 (up from 62 for the same quarter in 2008/09), with 44 from Central and 46 from Southern. Of these referrals, 145 children were involved (up from 102 from the same quarter in 2008/09), with 66 from Central and 79 from Southern. The rise in demand for MARAC services is in line with national research.
- Targets around increasing referrals to the MARACs from agencies other than the police and IDVAS have now been agreed with each District. They are:
 - City (20% by April 2010 – baseline for 2008/09 = 12);
 - South Cambs (50% by April 2010 – baseline for 2008/09 = 3);

Areas of Concern for Partnership to Note⁷

- That the restructuring of the SDAO team will lead to a reduction in services to victims of DV-related crimes.
- That a lack of funding will result in a reduction of IDVA services via the DAU in April 2010.

Recommendations to Partnership to Address Concerns⁸

- That the performance of the new police Central Referral Unit is monitored to ensure that there is no reduction in services.
- That work is undertaken through the DVP to ensure that funding for the IDVAS/DAU is maintained at an appropriate level to support high-risk victims of DV.

Any Items for Publicity⁹

None

⁶ Please ensure that you only highlight those notable achievements recorded against your Task Group's Action Plan.

⁷ Please ensure that you only highlight those concerns that your Task Group considers should be drawn to the attention of the Partnership.

⁸ Please ensure that, in connection with the above Areas of Concern, your Task Group sets out its Recommendations to the Partnership to address these Concerns, so that agreement can be made (where appropriate).

⁹ Please ensure that any items included here for Publicity are not protectively marked.

South Cambridgeshire CDRP – Q2 Performance Monitoring Report – July -
September 2009

3.2 Quarterly Performance Update

Priority theme	Number	Action	Milestones	Q1 Status	Q1 Progress	Q2 Status	Q2 Progress
Reducing Domestic Violence	3.1	Hold a quarterly DV task group	3.1a Assess data, discuss services, deliver support	Amber	The DV Task Group Q1 Progress report refers. The group met in May and is due to meet again in August. Discussions are on-going between South Cambs, City, the County DV Service Manager and other partners around provision of data services and support	Amber	The DV Task Group Q2 Progress report refers. The group met in May and is due to meet again in August. Discussions are on-going between South Cambs, City, the County DV Service Manager and other partners around provision of data services and support
Reducing Domestic Violence			3.1b Ensure representation on Southern Division MARAC	Amber	Discussions re: representation on-going	Amber	Discussions re: representation on-going
Reducing Domestic Violence			3.1c Work with County DV task group to establish a toolkit for measuring the effectiveness of local DV services	Amber	Toolkit development is still under discussion by City/South Cambs Joint DV Task Group	Amber	Toolkit development is still under discussion by City/South Cambs Joint DV Task Group
Reducing Domestic Violence			3.1d Use agreed toolkit to self-assess effectiveness of local DV services	Amber	Toolkit development is still under discussion by City/South Cambs Joint DV Task Group	Amber	Toolkit development is still under discussion by City/South Cambs Joint DV Task Group
Reducing Domestic Violence			3.1e Support plans for a County Domestic Abuse unit	Amber	Discussions on-going between South Cambs, City, the County DV Service Manager & other partners	Amber	Discussions on-going between South Cambs, City, the County DV Service Manager & other partners

South Cambridgeshire CDRP – Q2 Performance Monitoring Report – July - September 2009

Priority theme	Number	Action	Milestones	Q1 Status	Q1 Progress	Q2 Status	Q2 Progress
Reducing Domestic Violence	3.2	Raise awareness of Domestic Violence issues and services	3.2a Maintain an up to date web-based directory of domestic Violence services	Amber	This does exist, DV Task Group are in discussion around procedure for updating and future development.	Amber	DVTG are looking at aligning this with County-wide directory that the County Council are rolling out
Reducing Domestic Violence			3.2b Produce and distribute posters and cards advertising DV services	Green	DV Task Group cards have been produced for distribution on request. Several DV Task Group poster campaigns have taken place in the past year and similar campaigns are being discussion for the coming year	Green	DVTG has commissioned re-printing of a supply of 10,000 DV Contact cards
Reducing Domestic Violence			3.2c Increase the number of agency professionals who are aware of DV issues	Green	DV Awareness and Training events for 2009-10 are currently under development. The last event, in December 2008 attracted 40 delegates from partner organisations. In addition, Cambridge Magistrates have now received DV Awareness training and good feedback was received	Green	2009/10 DV Awareness day likely to take place in March - Sub Group of main DVTG formed to organise

South Cambridgeshire CDRP – Q2 Performance Monitoring Report – July - September 2009

Priority theme	Number	Action	Milestones	Q1 Status	Q1 Progress	Q2 Status	Q2 Progress
Reducing Domestic Violence	3.3	Provide support to victims of Domestic Violence	3.3a Run Freedom Programme to enable victims to identify and not tolerate DV	Green	Cambridge Women's Aid run several sessions per school term	Green	Cambridge Women's Aid run several sessions per school term
Reducing Domestic Violence			3.3b Run Young Peoples Freedom Programme	Amber	None held in Q1. There was a F4YP planned for Cambourne, but it was dropped due to lack of take up.	Amber	See Q1 – DVTG are working on alternative ways of advertising this service.
Reducing Domestic Violence			3.3c Investigate funding opportunities for Freedom programme	Amber	The joint City/South Cambs DV Task Group is looking into this on an on-going basis	Amber	The joint City/South Cambs DV Task Group is looking into this on an on-going basis
Reducing Domestic Violence			3.3d Meet requests to provide safe rooms via Sanctuary Scheme	Green	No requests received in South Cambs in Q1	Green	No requests received in South Cambs in Q2
Reducing Domestic Violence			3.3e Provide "Jackpot" alarms to DV victims to enable priority response by Police	Amber	This is still under discussion by DVTG	Amber	Other forms of warning device are being considered
Reducing Domestic Violence	3.4	Tackle perpetrators of domestic abuse	3.4a Refer appropriate DV perpetrators to Integrated Domestic Abuse Programme	Green	There were 2 referrals in South Cambs in Q1	Red	Stats Awaited
Reducing Domestic Violence			3.4b Contribute to county wide MAPPA scheme	Red	Stats Awaited	Red	Stats Awaited

Priority 4: Reducing Burglary

4.1 Quarterly Progress Report

Priority Area: Serious Acquisitive Crime

Lead Officer: Cllr John Reynolds

Key Achievements during this Quarter¹⁰

- Numbers of burglaries in the district are showing a decrease, with 36 in August, which was the lowest monthly total so far in 2009. In the first half of September, there had been 14 burglaries reported in the district, which gave a projected total figure for September of 28.
- Conviction of an individual who had admitted to 13 burglary offences in South Cambs and was sentenced to 8 years in custody.
- Another No Cold Calling Zone was established in the district during Q2 (Sawston). This takes the number of No Cold Calling Zones in the district to 26.
- Burglary Packs being given to burglary victims in the district supported by CDRP funding for Smartwater and feedback continues to be very positive.

Areas of Concern for Partnership to Note¹¹

- Need to progress with County CSO was facilitation meeting between SACTG members and County Magistrates to discuss sentencing policy. This has lapsed with previous post holder leaving and group feel it would be very beneficial to schedule this ASAP.

Recommendations to Partnership to Address Concerns¹²

- Explore possibility of scheduling meeting between SACTG and Magistrates to discuss sentencing policy.

Any Items for Publicity¹³

- Conviction of an individual who had admitted to 13 burglary offences in South Cambs and was sentenced to 8 years in custody.
- Another No Cold Calling Zone was established in the district during Q2 (Sawston). This takes the number of No Cold Calling Zones in the district to 26.
- Christmas Crime Prevention Message is being published in forthcoming edition of SCDC Magazine.

¹⁰ Please ensure that you only highlight those notable achievements recorded against your Task Group's Action Plan.

¹¹ Please ensure that you only highlight those concerns that your Task Group considers should be drawn to the attention of the Partnership.

¹² Please ensure that, in connection with the above Areas of Concern, your Task Group sets out its Recommendations to the Partnership to address these Concerns, so that agreement can be made (where appropriate).

¹³ Please ensure that any items included here for Publicity are not protectively marked.

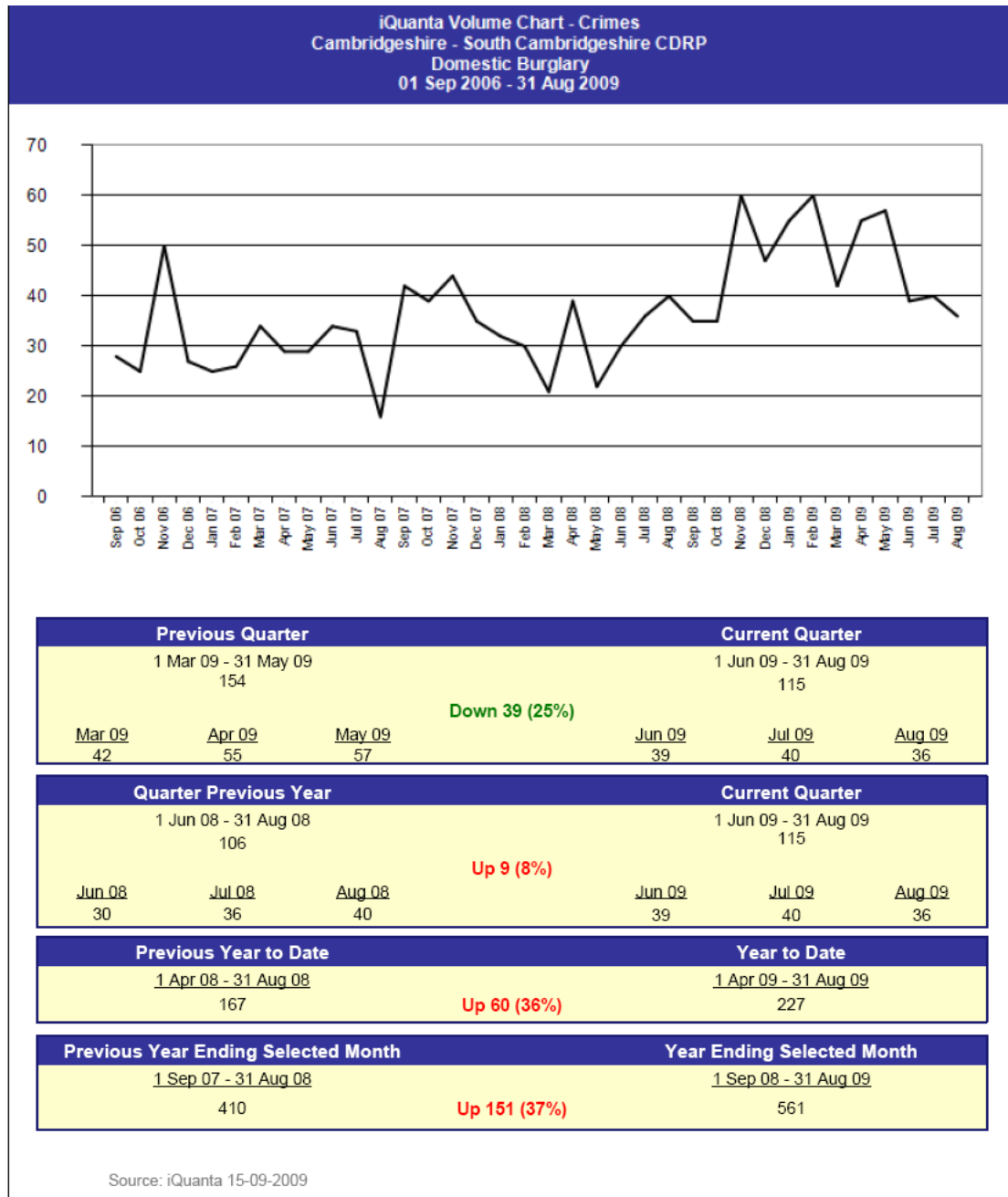
South Cambridgeshire CDRP – Q2 Performance Monitoring Report – July -
September 2009

4.2 Quarterly Performance Update

Priority theme	Number	Action	Milestones	Q1 Status	Q1 Progress	Q2 Status	Q2 Progress
Reducing Burglary	4.1	Hold a regular multi-agency Burglary Task Group	4.1a Meeting held every 2 months	Green	Meeting held	Green	Meeting held
Reducing Burglary			4.1b Burglary Task Group to identify and agree on CDRP initiatives in response to crime trends and hotspots	Green	£6,000 capital funding allocated to reducing burglary in SCDC housing areas	Green	See Q1
Reducing Burglary	4.2	Address known burglars through the PPO scheme	See Action 2.1 for more information				
Reducing Burglary	4.3	Provide support and advice to residents about keeping their homes secure	4.3a Regular messages distributed through e-cops	Green	This is distributed by Cambs Police. Regular messages have been distributed during Q1	Green	This is distributed by Cambs Police. Regular messages have been distributed during Q2
Reducing Burglary			4.3b Information distributed at road shows, Neighbourhood Panel meetings and to Parish Councils	Green	Info has been distributed at a number of these events during Q1. Exact event figures awaited	Green	Info has been distributed at a number of these events during Q2. Exact event figures awaited
Reducing Burglary			4.3c Make homes secure through the county wide Bobby Scheme	Green	- Bobby Scheme reps are asking all victims that they visit if they have had any doorstep sellers or cold callers at their home. Exact Figures Awaited	Green	- Bobby Scheme reps are asking all victims that they visit if they have had any doorstep sellers or cold callers at their home. Exact Figures Awaited
Reducing Burglary			4.3d Set up Cambridgeshire Homeshield scheme	Green	Scheme in place 13 referrals in SCDC in Q1	Red	25 Referrals in South Cambs in Q2

South Cambridgeshire CDRP – Q2 Performance Monitoring Report – July - September 2009

4.3 Latest Home Office Statistics



Priority 5: Reducing Vehicle Crime

5.1 Quarterly Progress Update

See section 4.1

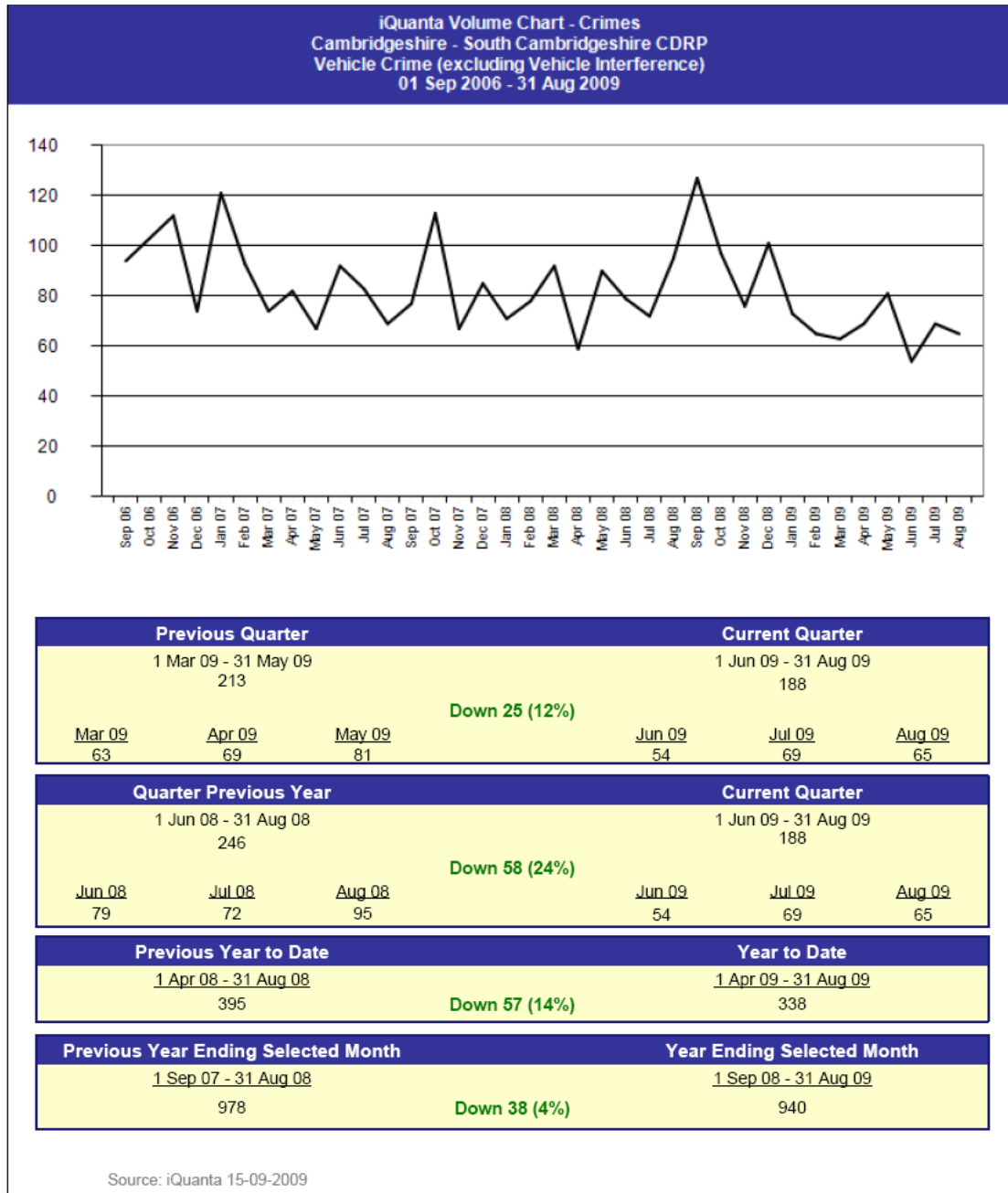
5.2 Quarterly Performance Update

Priority theme	Number	Action	Milestones	Q1 Status	Q1 Progress	Q2 Status	Q2 Progress
Reducing Vehicle Crime	5.1	Take preventative action to reduce vehicle crime	5.1a Vehicle Crime Task Group meeting held every 2 months	Green	Group is now part of Serious Acquisitive Crime Group	Green	Group is now part of Serious Acquisitive Crime Group
Reducing Vehicle Crime			5.1b Vehicle Task Group to identify and agree on initiatives in response to crime trends and hotspots	Amber	Focus has been on Burglary in the District	Amber	Focus has been on Burglary in the District
Reducing Vehicle Crime			5.1c Analyse vehicle crime data that contributes to National Indicator 16 (Reduce Serious acquisitive crime rate)	Amber	Focus has been on Burglary in the District	Amber	Focus has been on Burglary in the District
Reducing Vehicle Crime	5.2	Address known vehicle crime offenders through the PPO scheme	See action 2.1 for more information				

South Cambridgeshire CDRP – Q2 Performance Monitoring Report – July -
September 2009

Priority theme	Number	Action	Milestones	Q1 Status	Q1 Progress	Q2 Status	Q2 Progress
Reducing Vehicle Crime	5.3	Provide good advice to residents about keeping vehicles secure	5.3a Regular messages distributed through e-cops	Green	These are distributed. Feedback is regularly given and taken forward at Neighbourhood Panel Meetings	Green	These are distributed. Feedback is regularly given and taken forward at Neighbourhood Panel Meetings
Reducing Vehicle Crime			5.3b Information distributed at Neighbourhood Panel	Green	This is done. Feedback is regularly given and taken forward at Neighbourhood Panel Meetings	Green	These are distributed. Feedback is regularly given and taken forward at Neighbourhood Panel Meetings
Reducing Vehicle Crime			5.3c Hold 4 CDRP road shows a year	Amber	No road shows held in qtr 1 – events planned for later in year. CDRP has jointly hosted the Streets events and attended Neighbourhood Panels, taking forward appropriate actions	Amber	No road shows held in qtr 2 – events planned for later in year. CDRP has jointly hosted the Streets events and attended Neighbourhood Panels, taking forward appropriate actions

5.3 Latest Home Office Statistics



This page is left blank intentionally.

Project Name:	Growth Areas CDRP update
Period Covered:	September 2009
Date Issued:	25th September 2009
Produced By:	Tom Barrance

Schedule Status:
<p>Cambourne – Work underway re. Police Station, on target for completion and opening early 2010. 950 application & viability on-going. BMW site pre-application discussions in progress.</p> <p>Cambridge North West - (University, NIAB & NIAB extra) – task teams established and operating, led by Planning project team. Regular internal team meetings established.</p> <p>Orchard Park – Community Centre transferred with clerk relocated there from primary school. Work progressing on other POS transfers. Partners meeting and OPAG taken place along with visit from 50 delegates as part of the Regional Empowerment Partnership.</p> <p>Trumpington Meadows –S.106 signed Planning permission thus granted.</p>
Products completed during this period:
<p>Cambourne</p> <ul style="list-style-type: none"> • Foul drainage. Letter sent by EHO to MCA developments regarding on-going drainage issues. Raised with MCA board. • Uttons Drove issues relating to Cambourne raised and discussed in detail with MCA & Horizons. First meeting to establish apportionment of costs failed after withdrawal of HCA/Gallagher's. Meeting to be re-set by CH. Awaiting confirmation of date. • Work on revising S.106 H of T costing on-going. County education contribution revised. <p>Cambs North West</p> <ul style="list-style-type: none"> • Final AAP report received and published. Staff briefed on this. • Community facilities work initiated. Confirmed process with PS. • Establishment of formal planning project team. Project management arrangements put in place & agreed with City & County Council. • University confirmation received regarding Task groups. University team in place and agreed. EDAW appointed as master planning consultants. • Task groups & task leaders established, Paperwork circulated to all those taking part. • Initial Meetings held with University & Planning project group. Agreement on representation from all parties. • Air Quality monitoring agreed with City Council, incl. Type of monitoring. Equipment tender process completed. CH funding to be used for provision. Agreement in place for this with CH, HGF funding to be used. <p>Orchard Park</p> <ul style="list-style-type: none"> • Community Centre transferred 28/08/09. • Community centre alarm system partially installed, awaiting Community Council confirmation of other requirements including CCTV to implement final installation. • New Orchard Park Community Council Clerk (Mike Galloway) in post.. • Work started on POS1 with ground works and drainage almost complete, top soil being laid on the football pitches and bases for the hard surfaced courts. • Letter sent regarding outstanding street signs following street sign survey. • Partners meeting held with agreement reached on current work streams and further actions. Next meeting planned for December 09. • Orchard Park Action Group (OPAG) meeting took place with agreement to hold them quarterly in future with same attendees and rename it Orchard Park Liaison Group. • Inspector confirmed the extra 220 homes at OP in response to the housing shortfall consultation.

HIGHLIGHT REPORT

Trumpington Meadows

- Contractors continuing work on the River Cam, creating the gravel shoals, back water habitats, flood storage areas and brush wood bundles (faggots).
- Further refinement of design codes.